



Document 19-2434

Book 2019 Page 2434 Type CORNR Pages 1  
Date 6/18/2019 Time 9:51 AM  
Rec Amt \$7.00

KAREN SCHWANEBECK, RECORDER  
MARION COUNTY IOWA

Prepared by Abie C. Davis, P.E. & L.S., 1428 Oregon St., Knoxville, IA 50138 (641) 842-5863

# UNITED STATES PUBLIC LAND SURVEY CORNER CERTIFICATE OF

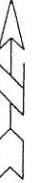
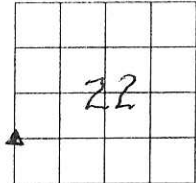
Land survey Monuments situated in Section 22, Township 76N, Range 21W of the Fifth Principal Meridian, Marion County, Iowa.

Previously recorded in Book 2, Page 121 in County Recorders Office.

Show reason for preparing this certificate, the evidence and detailed procedures used in establishing the corner positions and monumentation found or placed

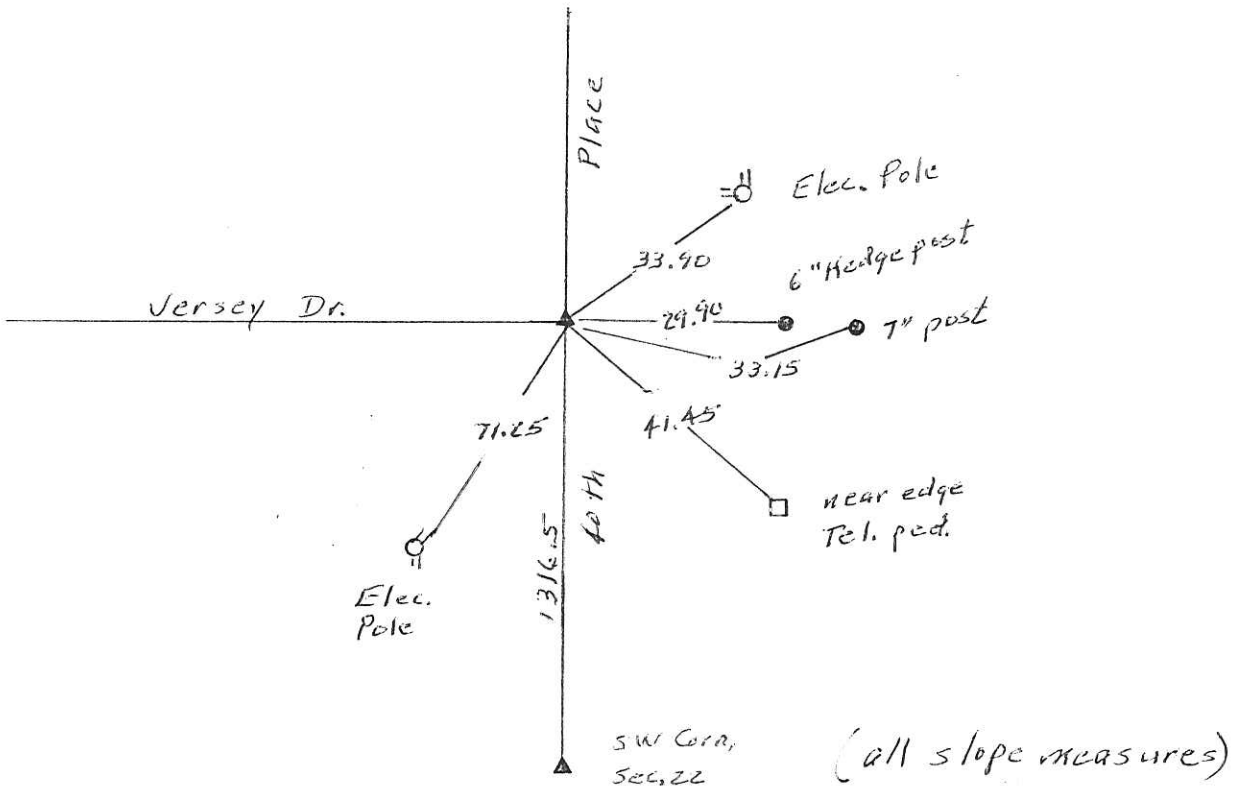
Monument Description and Remarks: Find 1/2" Iron Pin.

old ties were gone. set out new ties



## PLAN - VIEW

(Show a minimum of three reference ties to durable physical objects, relevant monuments and physical conditions that will enable recovery of the corner.)

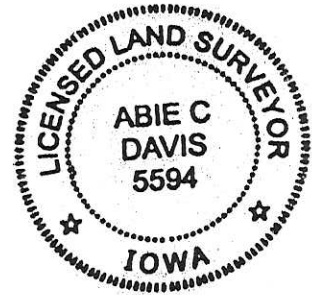


I hereby certify that the survey work was completed and this land surveying document was prepared by me or under my direct personal supervision and that I am a duly licensed land surveyor under the laws of the state of Iowa

Signature: Abie C. Davis  
Abie C. Davis, P.E. & L.S.  
Date: June 7, 2019 Reg. No. 5594

My license renewal date is December 31, 2019

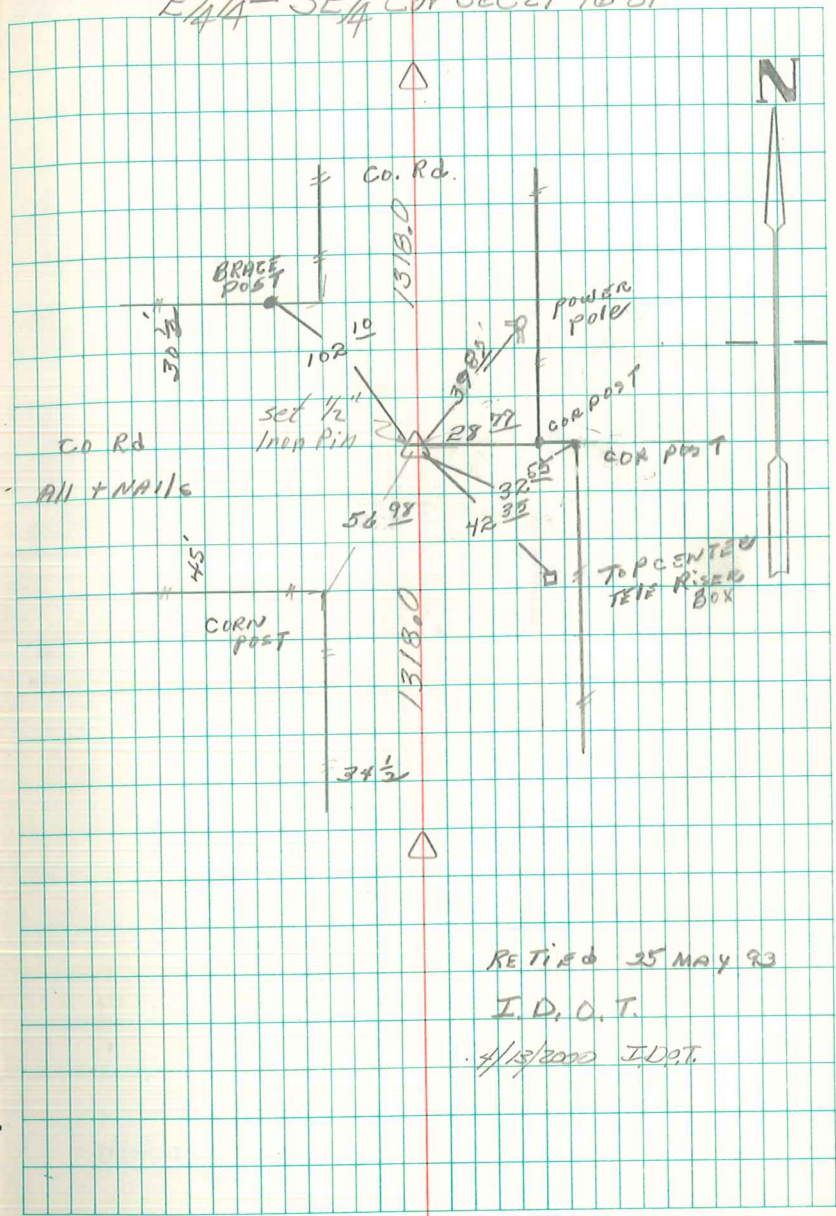
SEAL



List Corners to be Indexed			
Corners	Section	Twp	Range
NW Corn	22	76N	21W
SW & SW4			

R/S \$700 cash Ret Abie C. Davis

E 1/4 - SE 1/4 Cor sec 21-76-21



RETIRED 25 MAY 93  
 I.D.O.T.  
 4/13/2000 I.D.O.T.