



Document 18-196

Book 2018 Page 196 Type CORNR Pages 1
Date 1/16/2018 Time 10:36 AM
Rec Amt \$7.00

KAREN SCHWANEBECK, RECORDER
MARION COUNTY IOWA

Prepared By: J. Brian Morrissey, Morrissey Surveying & Consulting, LLC, 1405 Hwy. G28, Otley, Ia. 50214, 515-480-2531

UNITED STATES PUBLIC LAND SURVEY CORNER CERTIFICATE OF

Land Survey Monuments situated in Section 15, Township 76N, Range 21W, of the Fifth Principal Meridian, Marion County, Iowa.
Previously recorded in Bk. 2, P. 122 in the County Recorder's Office.
(book, page, document number, etc.)

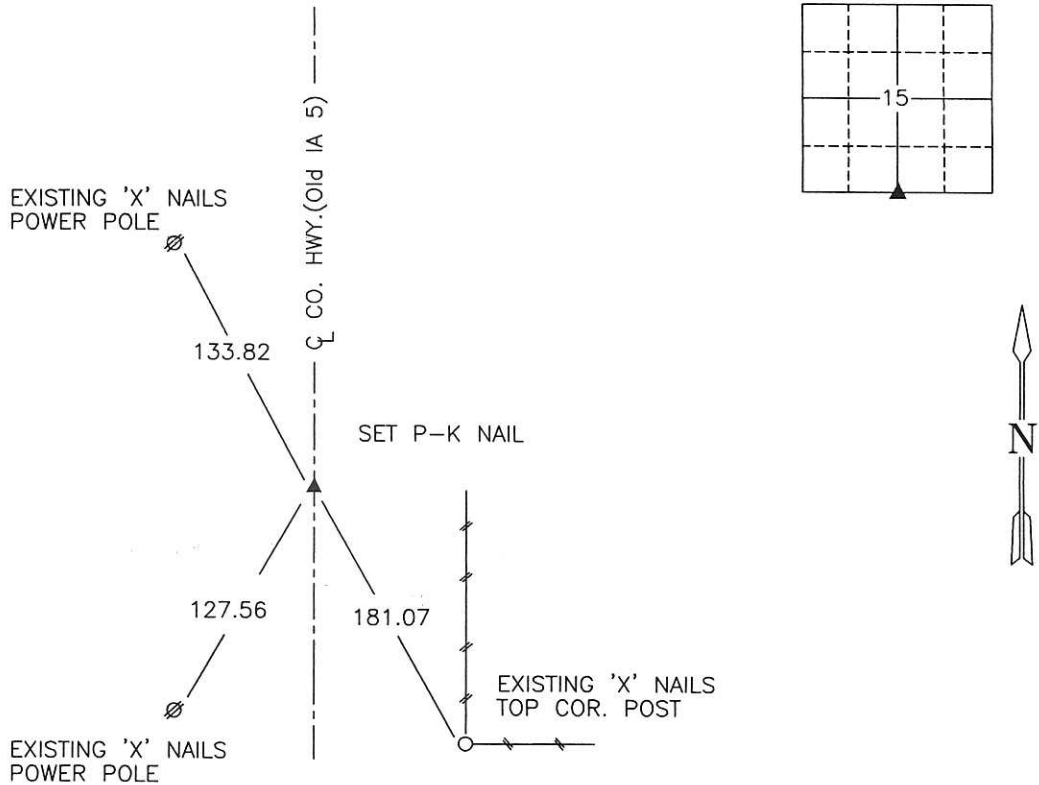
(Show reason for preparing this certificate, the evidence and detailed procedures used in establishing the corner positions and monumentation found or placed.)

Monument Description and Remarks: Set P-K nail in highway centerline using ties from pervious certificate.
Previous monument covered by HMA overlay.

This Corner was used for a Plat of Retracement Survey in Sections 15, 16, & 22, recorded in Bk. 2016, P. 2466.

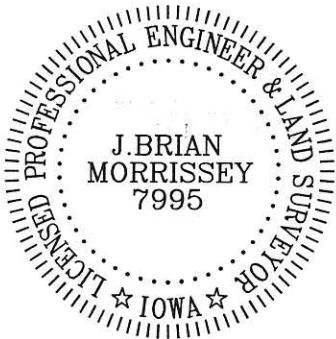
PLAN VIEW

(Show a minimum of three reference ties to durable physical objects, relevant monuments and physical conditions that will enable recovery of the corner.)



SE Corner, SW 1/4, Section 15

Date of Survey: 4/29/16



I hereby certify that this land surveying document was prepared and the related survey work was performed by me or under my direct personal supervision and that I am a duly Licensed Land Surveyor under the laws of the state of Iowa.

Signature: J. Brian Morrissey Date: 1/5/18
J. Brian Morrissey

License number 7995.
My license renewal date is December 31, 2019

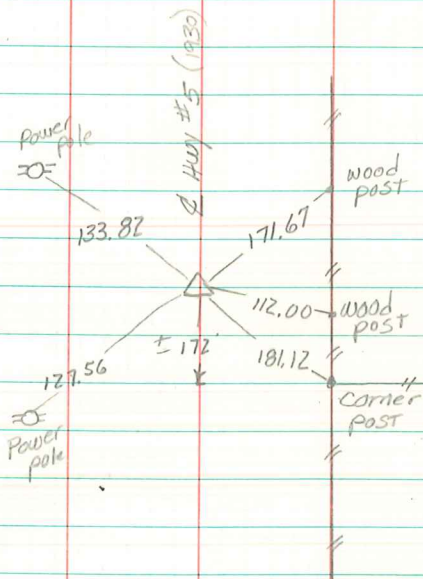
813-15-1/1

Pd \$700 ck - Ret Brian Morrissey

N¹/₄ CORNER

Sec 22 76-21

Pleasantville
Golf Course



Set D.O.T. BRASS PLUG on Hwy #5

Dennis KUNZE

4/13/2000