

Dug hole 8'x8' on all sides of Cor.  
Post. at intersections of old  
Established Fence Line going  
East, South, West & North.

Found No Evidence and assume  
Stone was removed in setting  
of Cor Post.

Established Cor. at intersection  
of F. Lines at west side of 15"  
Cor. Post to Fences S. N. & E.

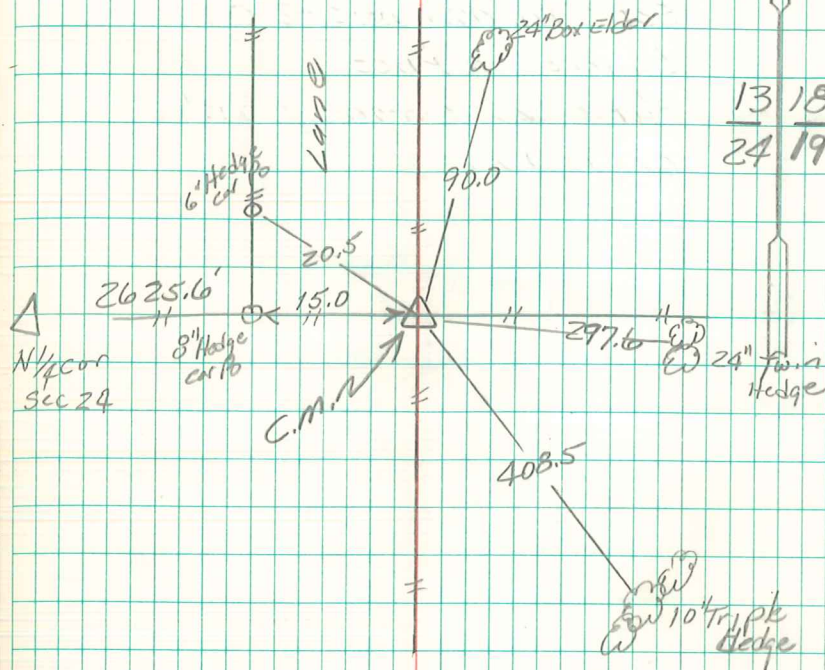
Set man over broken tile & glass  
with 4" Drain Tile over c.m.  
Flush with Ground Level.

90.0' S.W. of x Nails in 24" Box Elder  
20.5' S.E. " " " " " 6" Hedge cor P  
15.0' E. " " " " " 8" Cor P  
297.6' W. " " " " " 24" Twin Hedge Tree  
408.5' N45°W. " " " " " 10" Triple " "

N.E. Cor sec 24-76-21

Set, -11-21-41

Notes: Kennedy-Mandell, Mass &  
Elsberry.



13 18  
24 19