

Found creosote Hub stake of a
Former survey.

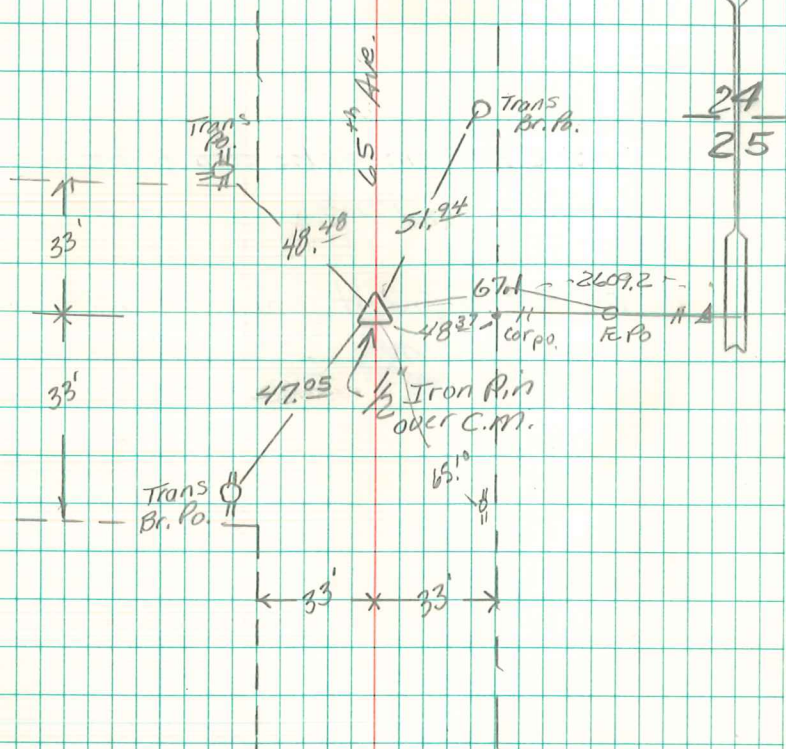
Set C.M. over broken Tile &
Crockerly. Put a Sand Stone
12" X 10" X 8" over TOP C.M.

N 1/4 Cor. Sec 25-76-21

Set! Nov-21-1941

Notes: Kennedy - Wells, Keith & Shore

22



Found & Retired

3/08/97 Frank Norton

5301

2/28/43 ABIE DAVIS