

Found sand stone 20"x12"x4"  
2-1/2" D Tile

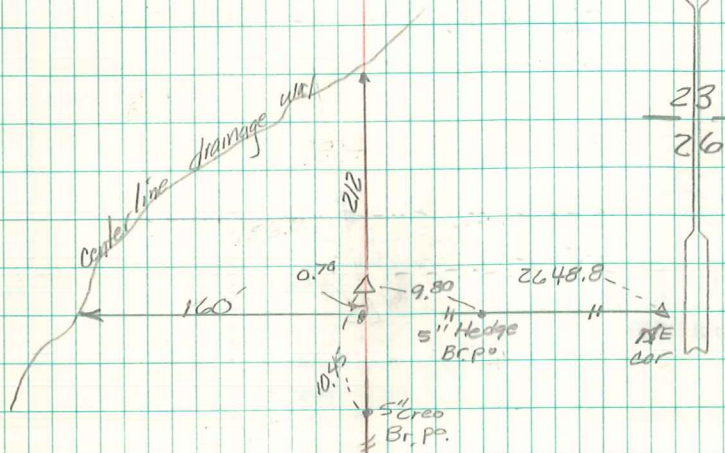
Set c.m. over 1-1/2" D Tile & Put  
stone over c.m.

C.M. 14" Below Surface

N<sup>1</sup>/<sub>4</sub> Cor 26-76-21

Set 6-27-40

Notes: Wignall



Find 20"x12"x4" stone above CM  
CM 24" deep. Set 2" iron  
bar over CM 6" above  
ground. Reset stone on  
West side iron bar.  
Abie Davis 12/05/41