

E<sub>4</sub> Cor 27-76-21

Set 6-27-40

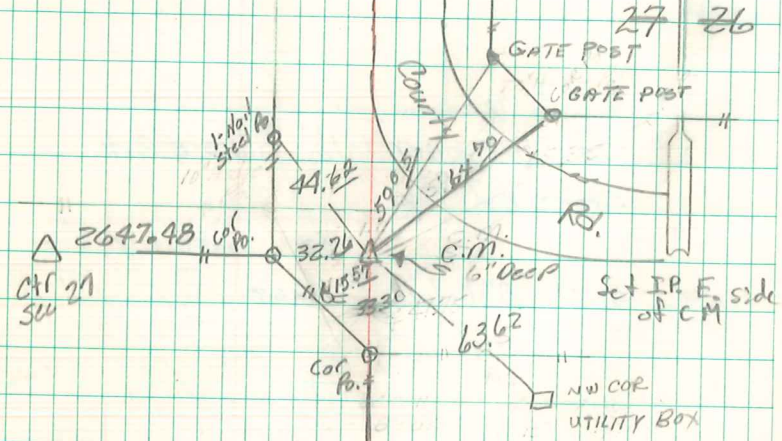
Notes: Wignall

End Sandstone 12"x8"x3"

Set C.M. 12" below surface stone top C.M.†

† Nails in  
All wood & post

N



Found & Retied  
By I.D.O.T.  
1978

RETIED 20 MAY 93

I.D.O.T.

Retied 4/17/2000 I.D.O.T.