

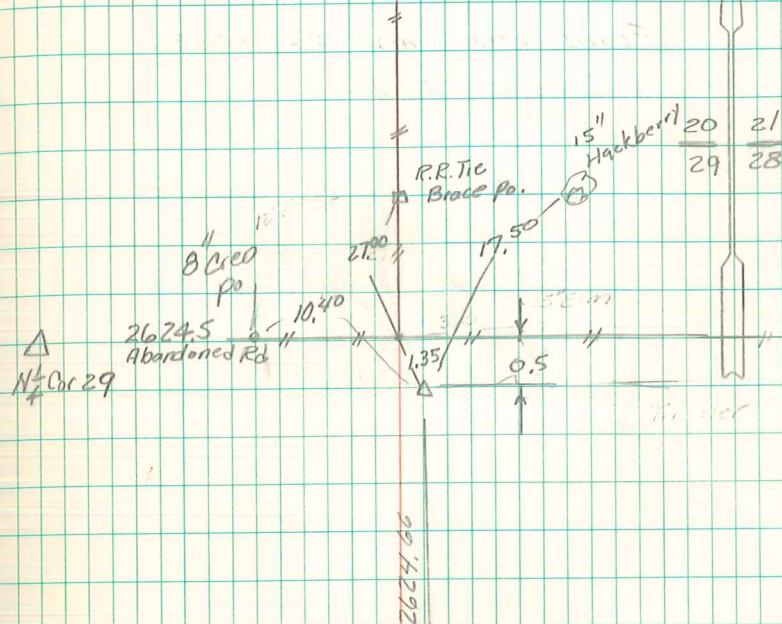
Found stone 16" x 10" x 4" & 1 & 1/2
2" Horse shoe tile

Set concrete mon. over 1-D tile
& placed stone on top.

N.E. Cor 29-76-21

Set 6-27-40

By Nandell, Frazier, Harger
Notes by Wignall



And limestone over on
set 5/8" iron pin w/ yellow
cap # 5594 over stone.
Abc Davis 6/21/01

