

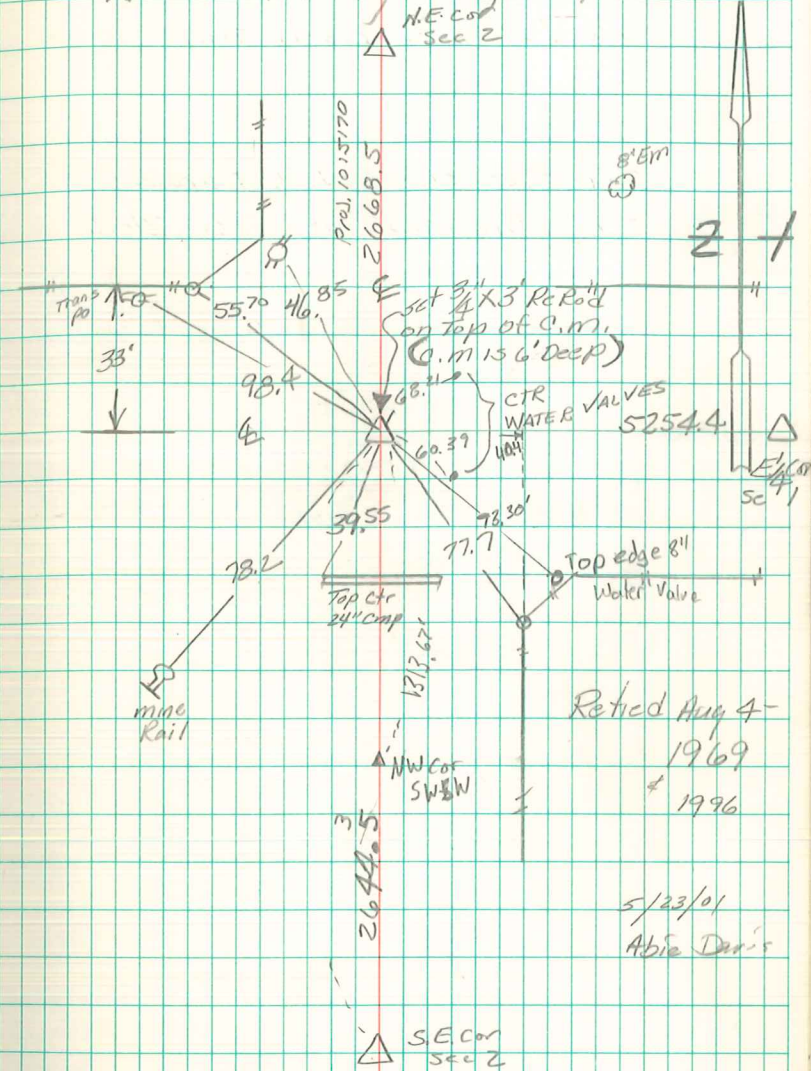
Found Shattered sandstone  
10" x 6" x 3" over Broken Tile

Set man over 1-2" O.E. broken  
Tile. Put the stone on top C.M.

E 1/4 Cor Sec 2-76-21

Set 11-7-41

Notes: Kennedy - Wells Shore & Moss



Retired Aug 4-  
1969  
1996

5/23/01  
Abie Davis