

KAREN SCHWANEBECK, RECORDER
MARION COUNTY IOWA

Prepared by Abie C. Davis, P.E. & L.S., 1428 Oregon St., Knoxville, IA 50138 (641) 842-5863

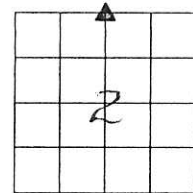
UNITED STATES PUBLIC LAND SURVEY CORNER CERTIFICATE OF

Land survey Monuments situated in Section 2, Township 76N, Range 21W, of the Fifth Principal Meridian, Marion County, Iowa.

Previously recorded in N/A in County Recorders Office.

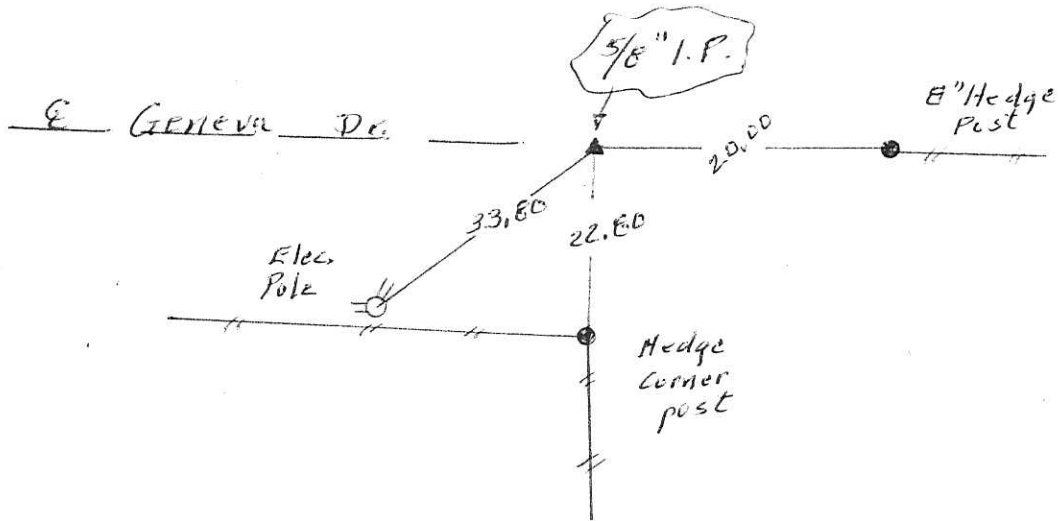
Show reason for preparing this certificate, the evidence and detailed procedures used in establishing the corner positions and monumentation found or placed

Monument Description and Remarks: Dug hole 2' deep at location indicated by existing ties, find nothing. set 5/8" Iron Pin at indicated location and set out current ties.



PLAN - VIEW

(Show a minimum of three reference ties to durable physical objects, relevant monuments and physical conditions that will enable recovery of the corner.)



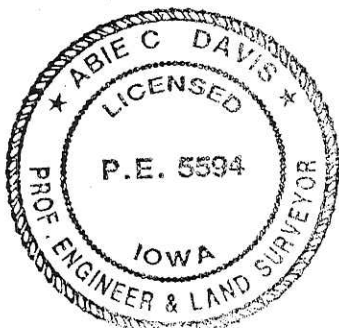
I hereby certify that the survey work was completed and this land surveying document was prepared by me or under my direct personal supervision and that I am a duly licensed land surveyor under the laws of the state of Iowa

Signature: Abie Davis
Abie C. Davis, P.E. & L.S.

Date: 9/30/16 Reg. No. 5594

My license renewal date is December 31, 2017

SEAL



List Corners to be Indexed

Corners	Section	Twp	Range
N4	2	76N	21W

Ret Abie Davis

Found crushed Sand Rock 14"x8"x6"

Set C.M. over Crookery Crushed
Rock on North side Building Block
12" Long on Top C.M.

C.M. 18" Below Surface

N¹/₂ Cor 2-76-21

Set 12-10-40

Notes: Nardell

Party = Wells, Burrus & Harger

