

KAREN SCHWANEBECK, RECORDER
MARION COUNTY IOWA

Prepared by Abie C. Davis, P.E. & L.S., 1428 Oregon St., Knoxville, IA 50138 (641) 842-5863

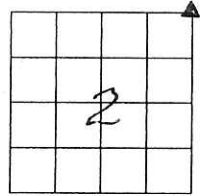
UNITED STATES PUBLIC LAND SURVEY CORNER CERTIFICATE
OF

Land survey Monuments situated in Section 2, Township 76N, Range 21W of the Fifth Principal Meridian, Marion County, Iowa.

Previously recorded in N/A in County Recorders Office.

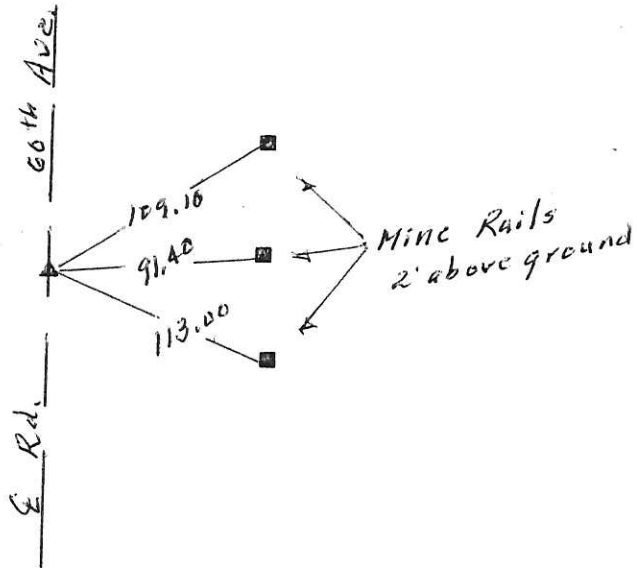
Show reason for preparing this certificate, the evidence and detailed procedures used in establishing the corner positions and monumentation found or placed

Monument Description and Remarks: Found Iron Pipe from ties at Co. Engr. office and confirmed by measurement.



PLAN - VIEW

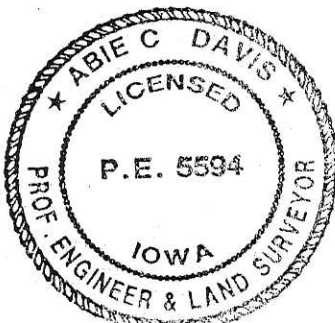
(Show a minimum of three reference ties to durable physical objects, relevant monuments and physical conditions that will enable recovery of the corner.)



I hereby certify that the survey work was completed and this land surveying document was prepared by me or under my direct personal supervision and that I am a duly licensed land surveyor under the laws of the state of Iowa

Signature: Abie C Davis
Abie C. Davis, P.E. & L.S.
Date: 9/30/16 Reg. No. 5594
My license renewal date is December 31, 2017

SEAL



List Corners to be Indexed			
Corners	Section	Twp	Range
NE	2	76N	21W

PL \$700 Cash - Ret Abie Davis

N.E. Cor 2-76-21

set 5-27-41

Notes: w.g. wall

June-11-1971
this Cor Destroyed
By Construction
cut out.

Set 1" Iron P.P.
7" deep in
place where Cor
was.

Exc. cor
section
35-77-21

R2688.5

R2688.5

Exc. cor
set 2

