

Found 2-2" Horse Shoe Tile &  
Granit Rock 11"x8"x6"

Set Man over one of the 2"  
Horse Shoe Tile Lowered in Place.

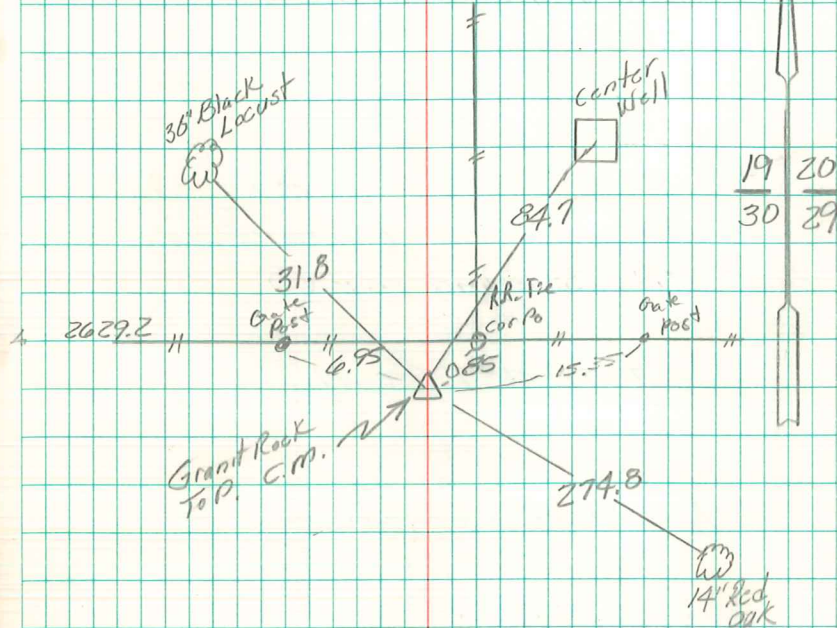
Put the Granit Rock on Top C.M.

274.8' N.W. of x Nails in 14" R. Oak Tree  
31.8' S.E. " " " " 30" Black Locust  
84.7' S.W. " Center Well  
0.5' S.W. " oak Cor. Post.

N.E. Cor Sec. 30-76-21

Set: 5-20-41

Notes: Kennedy, Wells - Barrus & Glass.



Found 11"x8"x6" Granit Rock  
12" deep over CM 22" deep,  
Set 5/8" iron Pin over top of  
CM and rock, IP 3" above  
ground Cap \*5574  
Alvie Davis 4/10/01