

Found 2 small Granit Rock both
3"x3"x2" over 2-3" Drain Tile Filled
with concrete.

set c.m. on one 2" D tile Lowered
in Place

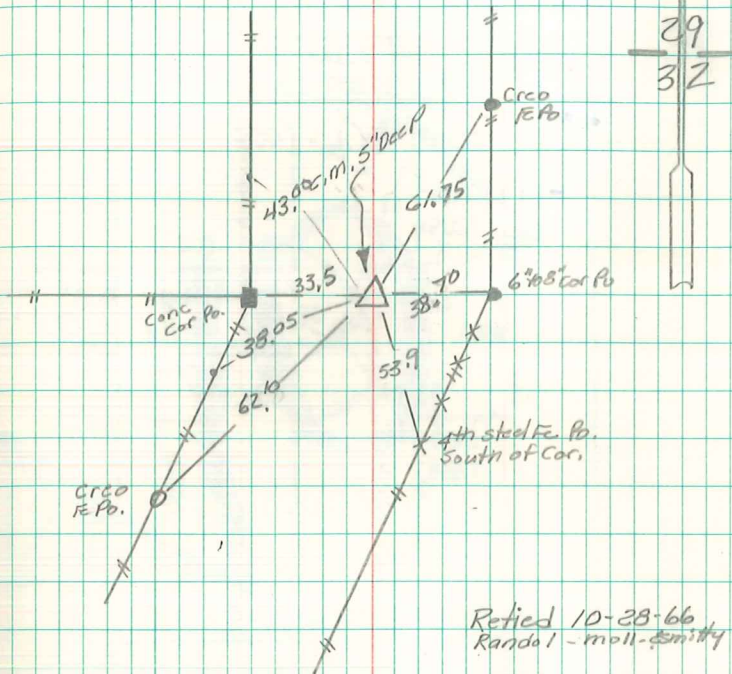
c.m. 12" under Top Surface
Rock on Top c.m.

N¹/₄ Cor 32-76-21

set 11-16-40

Notes - Kennedy

Party shore, Mitchell



Retied 10-28-66
Randall - moll. Smithy

5/8" iron pin on
N. side of CM
cap #5594

Retied 4/7/04
Abra Davis