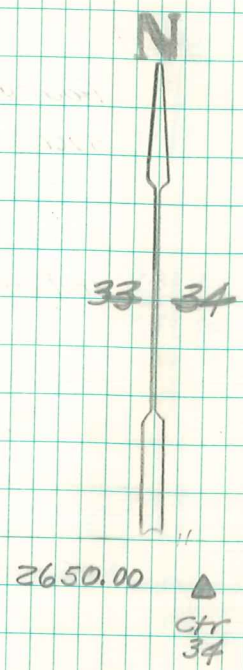
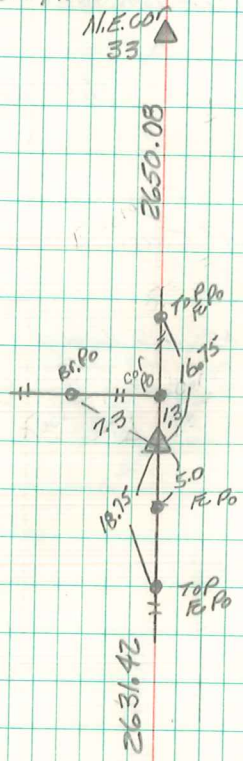


Found Granit Rock 22"x11"x6"
Broken into 1-2" D tile Laying Down
on south side Rock.

Set c.m. on tile Right where we found
it, standing on end.

Rock on top man sticking
above surface

E $\frac{1}{4}$ Cor 33-76-21
set 11-6-40
Notes Kennedy
Party- Shore & Mitchell



Retked By
I.O.O.T. - 1978

Township
N.E. Cor 4-75-21
S.W. Cor 34-76-21
line