

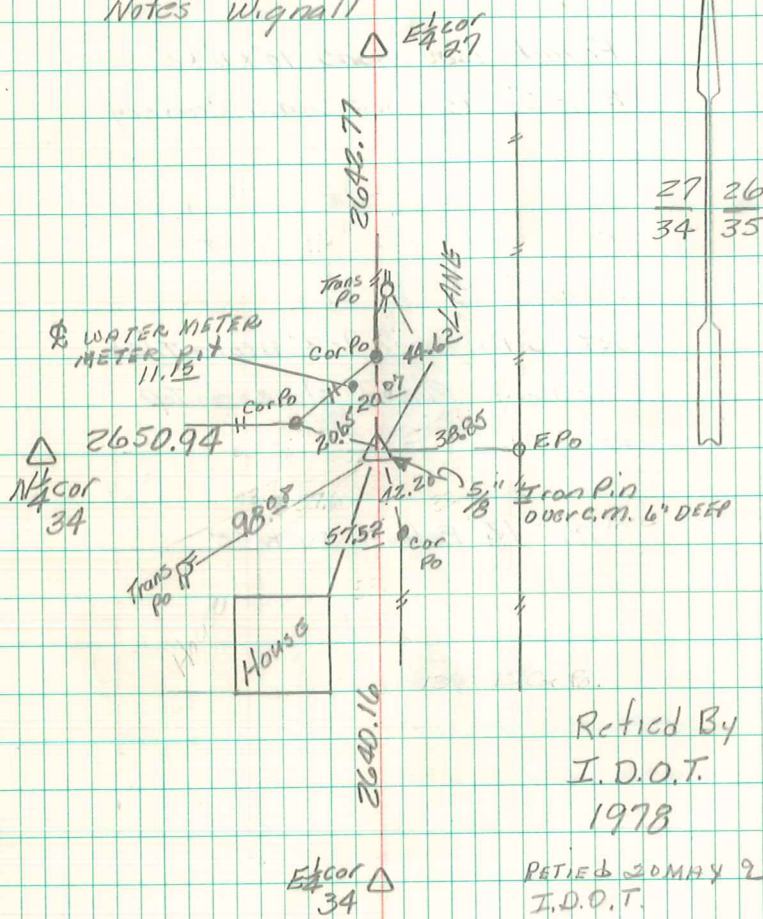
Found Two Sandstone 16"x6"x6"  
16"x6"x8" over two 1 1/2" D Tile

set c.m. over one 1 1/2" D Tile  
stone over c.m. & one on  
N.S. do c.m.

N.E. Cor 34-76-21

set 6-26-40

Notes Wignall



Retied By  
I.D.O.T.  
1978

RETIED 20 MAY 92  
I.D.O.T.

Retied 4/17/2000 I.D.O.T.