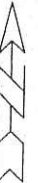
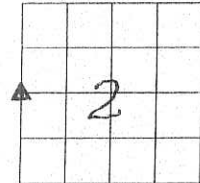


UNITED STATES PUBLIC LAND SURVEY CORNER CERTIFICATE
OF

Land survey Monuments situated in Section 2, Township 76N, Range 21W, of the Fifth Principal Meridian, Marion Co. County, Iowa.

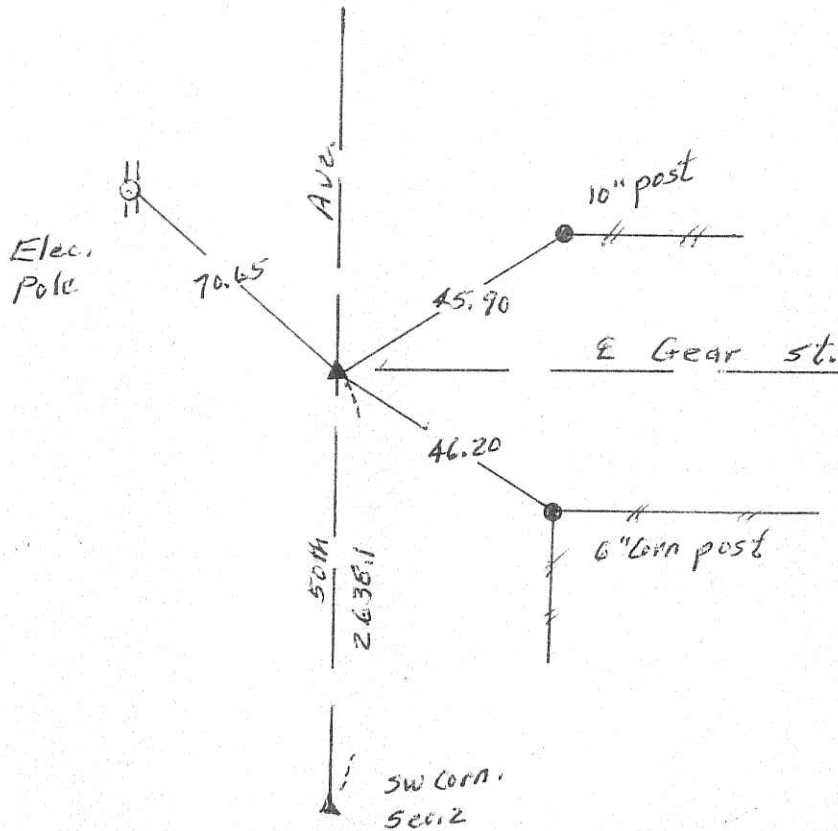
Previously recorded in _____ in County Recorders Office.
(book, page, document number, etc.)
Show reason for preparing this certificate, the evidence and detailed procedures used in establishing the corner positions and monumentation found or placed

Monument Description and Remarks: Found Iron Pin
over CM



PLAN - VIEW

(Show a minimum of three reference ties to durable physical objects, relevant monuments and physical conditions that will enable recovery of the corner.)



I hereby certify that the survey work was completed and this land surveying document was prepared by me or under my direct personal supervision and that I am a duly licensed land surveyor under the laws of the state of Iowa

Signature: Abie C. Davis
Abie C. Davis, P.E. & L.S.

Date: 1/3/19 Reg. No. 5594

My license renewal date is December 31, 2019

SEAL



List Corners to be Indexed
Corners Section Twp Range

WA 2 76N 21W

Found sandstone 10"x6"x6" over
4" Drain Tile

Set man over 1-2" ϕ standing
on END, Put stone on TOP C.M.

41.8' N.W. of x Nails in 10" oak cor Po
45.9' SW. " " " " " " " "
35.7' S.E. " " " " 14" Gate Po
33.4' East " " " " 8" Hedge Cor Po
34.5' N.E. " " " " Trans Pole

E. 1/4 Cor sec 3-76-21

Set: 11-4-41

Notes: Kennedy-Wells, Shore
& Mass.

