

Found 2-2" Tile Right where
we set man.

set man over 1-2" Tile
Lowered in Place.

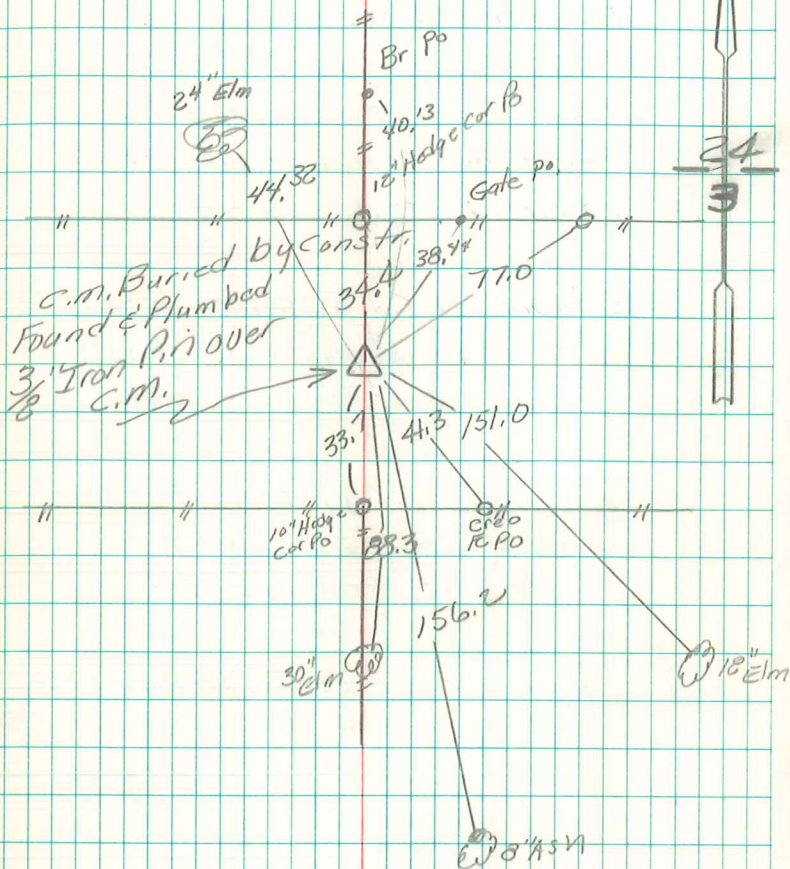
We put a sandstone 14"x10"x5"
on top man.

Nikor sec 3-76-21

set: 11-8-41

Notes: Kennedy - Wells, Shore

7



C.M. Buried by
Found & Plumbed
3 1/2 Iron P. in over
C.M.

Retied 12/5/03
Brian Morrissey