

Found Pieces of Lime Stone  
had been broken

Set man over 1-2" Horse Shoe  
Tile, standing on END

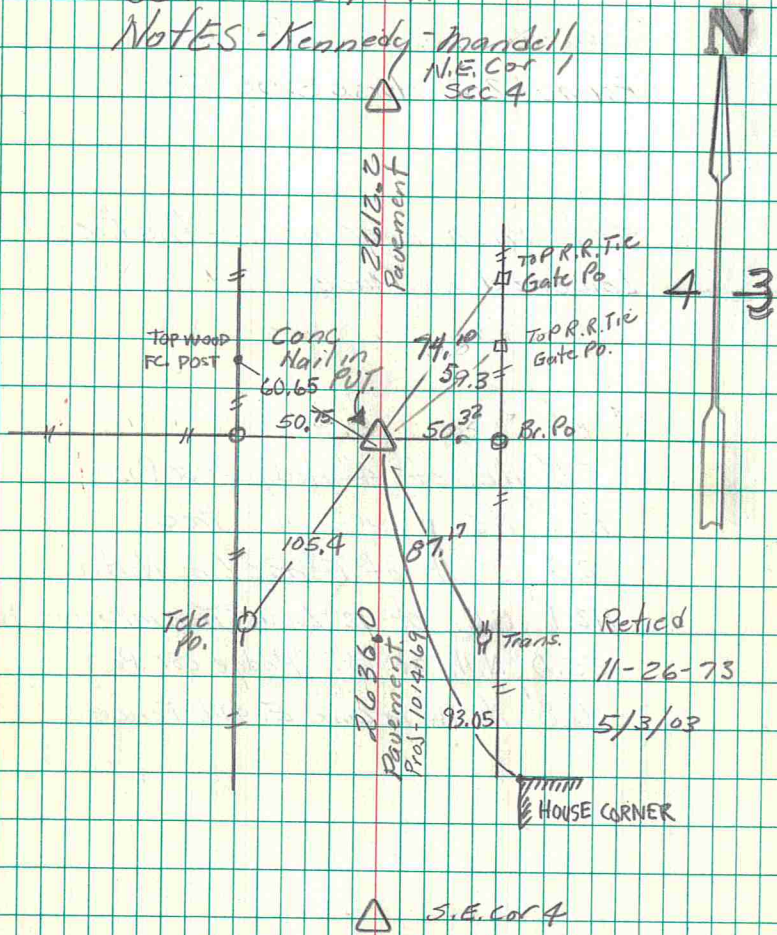
Put Stone on TOP man.

E. 1/4 Cor Sec 4-76-21

Set - 10-29-41

Notes - Kennedy - Mandell

N.E. Cor  
Sec 4



Retied  
11-26-73  
5/3/03

HATCH, SCHIPPERS 5/24/21

Found Pieces of Lime Stone  
had been broken

Set mon over 1-2" Horse Shoe  
Tile, standing on END

Put Stone on TOP mon.

E. 1/4 Cor Sec 4-76-21

Set - 10-29-41

NOTES - Kennedy - Mandell

N.E. Cor  
Sec 4

