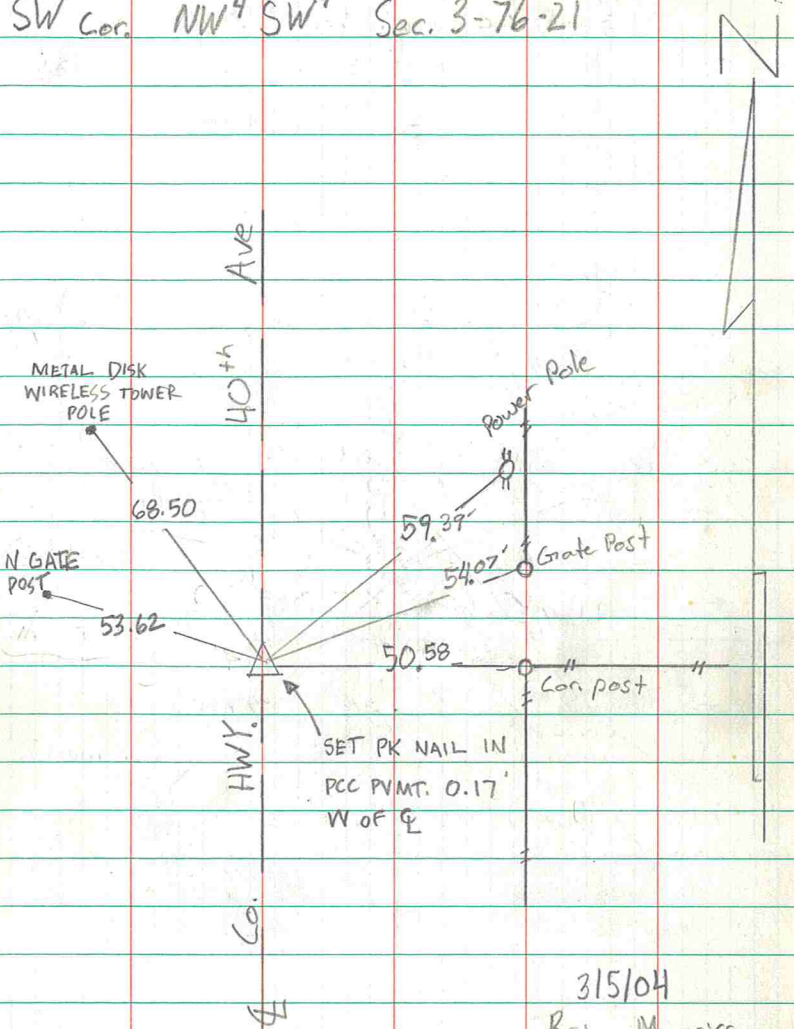


SW Cor. NW⁴ SW⁴ Sec. 3-76-21



Ave

40th

METAL DISK
WIRELESS TOWER
POLE

68.50

N GATE
POST

53.62

Power Pole

59.37

Gate Post

54.07

50.58

Con. post

HWT.

SET PK NAIL IN
PCC PVMT. 0.17
W OF C

Co.

E

315/04

Brian Morrissey

HATCH, SCHIPPERS 5/24/21

SW Cor. NW⁴ SW⁴ Sec. 3-76-21

N

