

Found sand stone 12"x8"x6"
over 2-2" Horse Shoe Tile

Set C.M. over 1-2" Horse Shoe Tile
Lowered in Place,

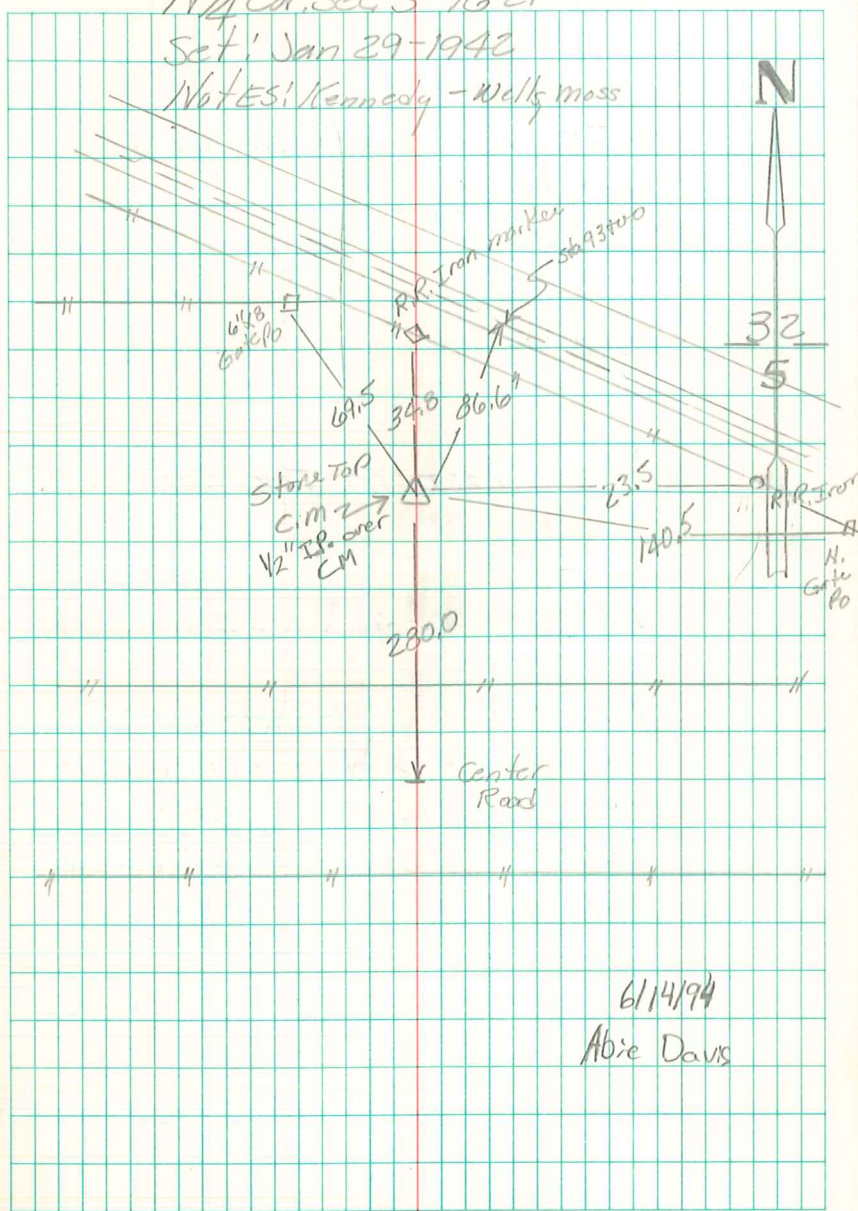
Put the stone on top C.M.

23.5' West of rail road Iron Hwy Marker
34.8' South " " " " "
69.5' S.E. " 6"x8" oak Gate Po.
280.0' North " Center Road going west.
170.8' N.W. " 8" box Elder Tree
73.3' S.W. " Sta 94+00 on Pavement
86.6' S.W. " " 93+00 " "

N¹/₄ Cor. sec. 5-76-21

Set: Jan 29-1942

NOTES: Kennedy - Wells mass



6/14/94
Abie Davis