

UNITED STATES PUBLIC LAND SURVEY CORNER CERTIFICATE OF

Land Survey Monuments situation in Section 60, Township 76 N, Range 21 W, of the Fifth Principal Meridian, Marion County, Iowa.
Previously recorded in N/A in County Recorder's Office.
(book, page, document number, etc)

(Show reason for preparing this certificate, the evidence and detailed procedures used in establishing the corner positions and monumentation found or placed.)

Monument Description and Remarks: NE Corner Section 60-76-21, Fnd. Conc. Monument;
E 1/4 corner sec. 60-76-21, set 1/2" Rebar with cap # 11465 on N-S Fence at
The Intersection With Old Fence Line East;
W 1/4 Corner Section 60-76-21,
set 1/2" Rebar with Cap # 11465 at Old Fence Corner Past South of
South Roadway Right of Way Line.

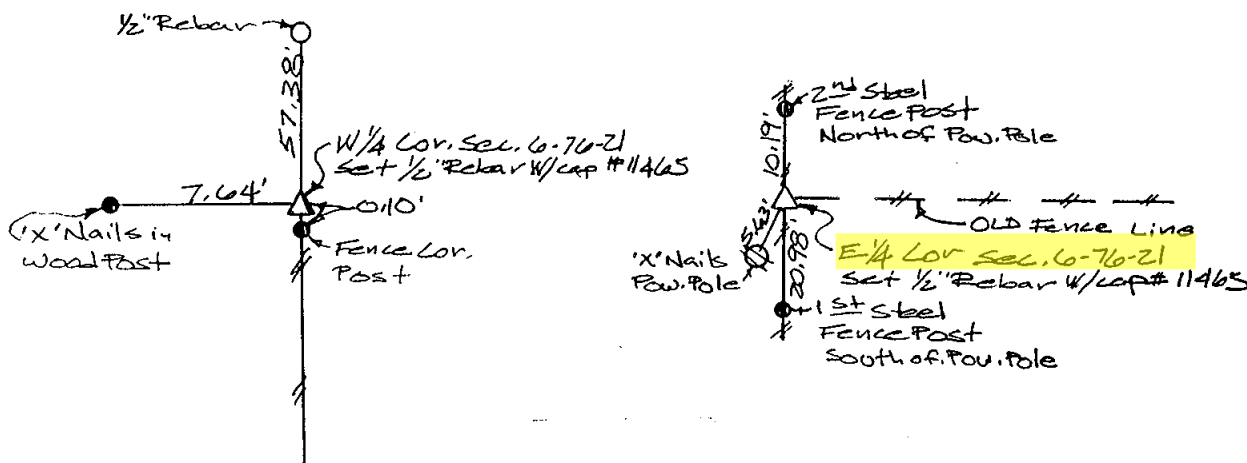
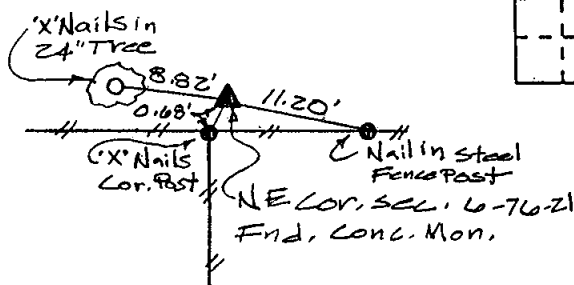
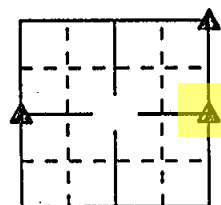
PLAN - VIEW

(Show a minimum of three reference ties to durable physical objects, relevant monuments and physical conditions that will enable recovery of the corner.)

INSTR. NO. 5192
BOOK 1 PAGE 433
RECD. FEE 6.00

98 AUG 21 AM 10:49

TRANSFER
SANDRA S. AGAN
MARION CO. RECORDER



I hereby certify that the survey work was completed and this certificate was prepared by me or under my direct personal supervision and that I am a duly registered land surveyor under the laws of the state of Iowa.

Signature: Mark F. Wandro
Name typed or printed: MARK F. WANDRO
Date: 8-17-98 Reg. No. 11465

| List Corners to be Indexed | | | |
|----------------------------|---------|-----|-------|
| Corners | Section | Twp | Range |
| NE | 60 | 76 | 21 |
| E 1/4 | 60 | 76 | 21 |
| W 1/4 | 60 | 76 | 21 |



SEAL

3405 Curran Ave DM 50310
Prof. M. Wandro

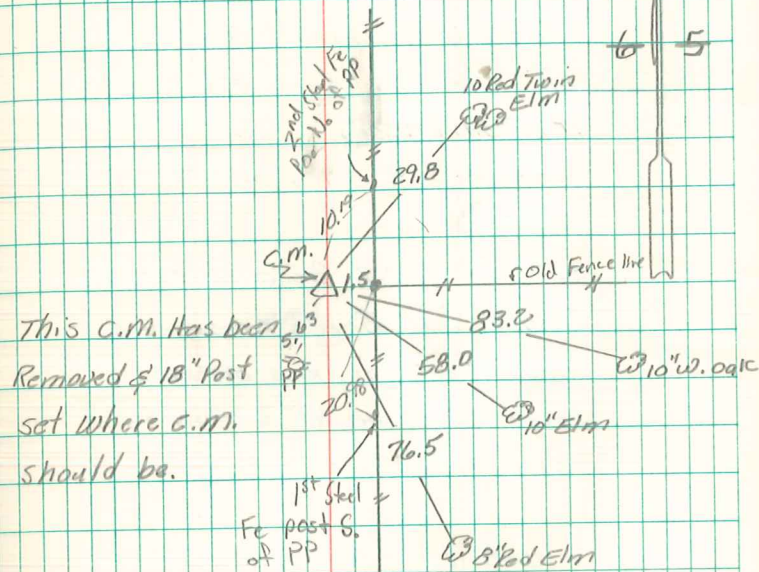
Found Granit Rock 14"x8"x10"

set C.M. over $\frac{1}{2}$ Gallon of Broken
Granit Rock. & Placed Granit
Rock on Top C.M.

E $\frac{1}{4}$ Cor 6-76-21

set 7-8-40

by Nandell, Frazier, Harger
Sharp & Notes by Wignall



Retied 8/17/98

Set $\frac{1}{2}$ " Rebar w/ cap #11/165