

N

Found Granit Rock over 2-2"
Horse shoe Tile

Set man over 1-2" \square lowered
in place.

Put the Granit Rock over C.M.

125.1' N.E. \square Elm Tree
82.8' East " Hack berry tree
50.0' West " Granit Rock Iron under
33.0' North " " " "

E. 1/4 Cor sec 8-76-21

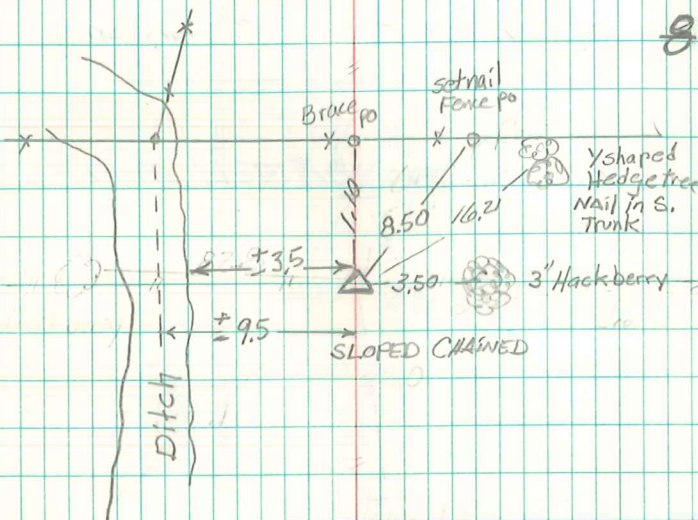
Set - 10-29-41

Notes: Kennedy - Mandell, Frazier &
Shore

18

N

8-9



Found WPA conc. Manu MARKED 8+9 with
Yellow 12"x16"x2" Granite Rock on Top 2" exposed,
Placed 5/8" rebar on West side of S.C.M.
For Locater use only. Dennis Kunze IDOT 4/13/2000