

Found Lime stone 14"x10"x8"  
& 2-1/2" D tile

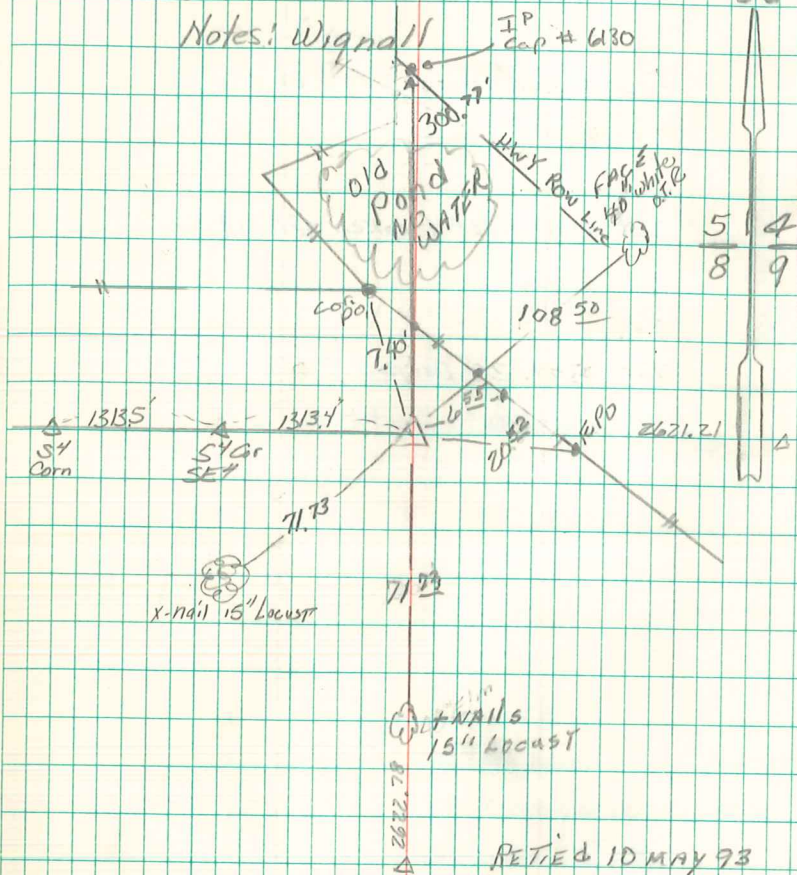
Set C.M. over 1-1/2" D tile stone  
on top C.M.

C.M. 12" Below surface

N.E. Cor 8-76-21

set. 7-8-40

Notes: Wignall



RETIED 10 MAY 93

J.D.O.T.

Found 14"x10"x8" Limestone over CM 16" deep.

Set 3/8" iron pin w/cap over CM & C.M. & set Limestone  
on W. side. Abie Davis

Retied 4/15/00 J.D.O.T.  
Dennis Huxce