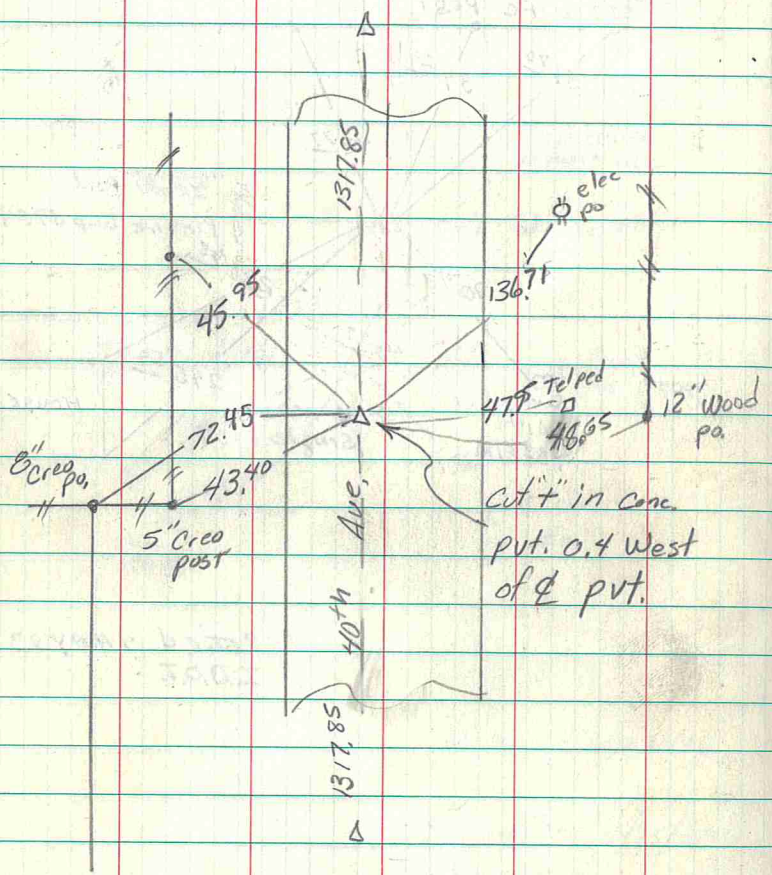


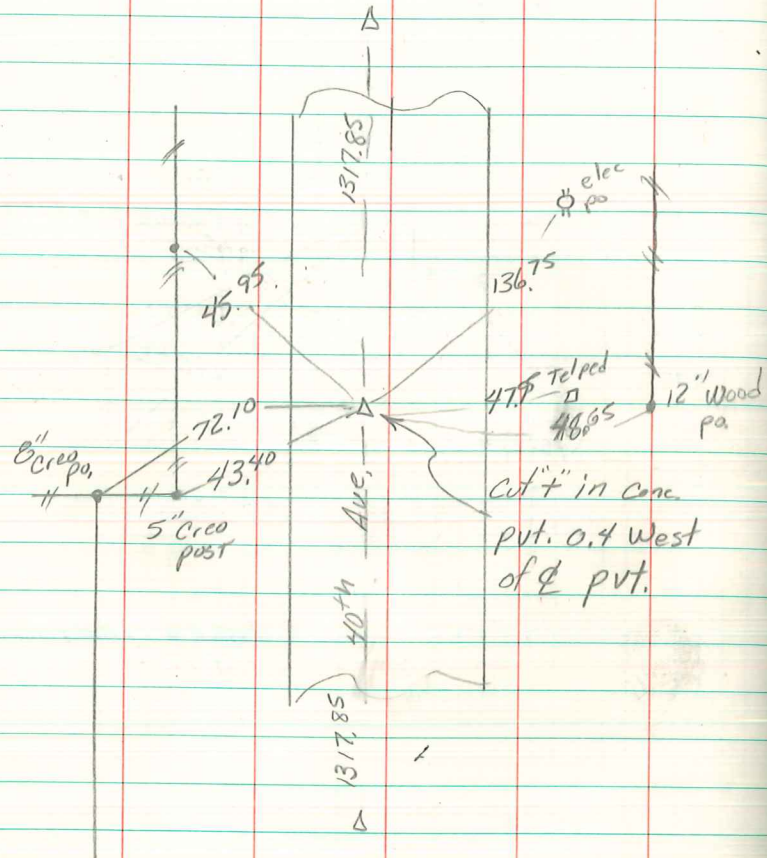
SE Cor NE<sup>4</sup> NE<sup>4</sup>  
 Sec 9-76-21



6/4/01 Abie Davis  
 HATCH, SCHIPPERS 5/24/21

SE Cor NE<sup>4</sup> NE<sup>4</sup>

Sec 9 - 76-21



6/4/01 Abie Davis