



Document 22-485

Book 2022 Page 485 Type CORNR Pages 1
Date 1/26/2022 Time 11:52 AM
Rec Amt \$7.00

KAREN SCHWANEBECK, RECORDER
MARION COUNTY IOWA

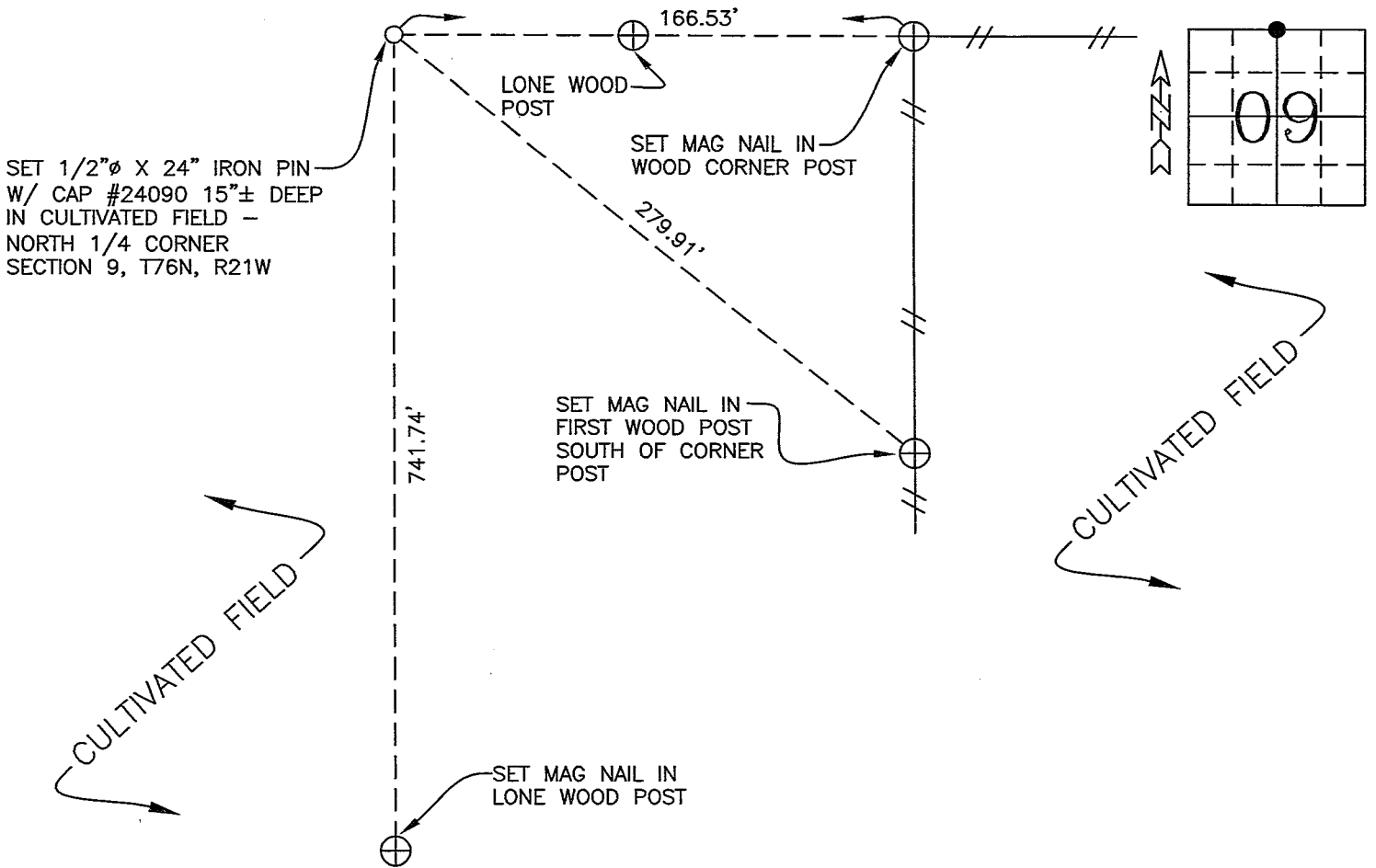
PREPARED BY AND RETURN TO: J. MILLER 610 N. 4TH, SUITE 100 BURLINGTON, IOWA 319-752-3603
UNITED STATES PUBLIC LAND SURVEY CORNER CERTIFICATE
OF

Land survey Monuments situated in Section 9, Township 76N, Range 21W, of the Fifth Principal Meridian, MARION County, Iowa.

Previously shown in UNRECORDED COUNTY FIELD NOTES DATED 4/13/2000 in County Recorder's Office.
(book, page, document number, etc.)

(Show reason for preparing this certificate, the evidence and detailed procedures used in establishing the corner positions and monumentation found or placed)

Monument Description and Remarks: TIES MISSING AND MONUMENT CHANGED - FENCE LINE AND TREES REFERRED TO IN COUNTY FIELD NOTES HAVE BEEN REMOVED. FOUND REMNANTS OF DESTROYED WPA MONUMENT AND SANDSTONE REFERRED TO IN MARION COUNTY FIELD NOTES DATED 4/13/2000. SET 1/2"Ø X 24" IRON PIN W/ CAP #24090 15"± DEEP IN CULTIVATED FIELD USING INFORMATION FROM RECORDED PLATS AND PHYSICAL EVIDENCE FOUND DURING THE COURSE OF PERFORMING THIS SURVEY.



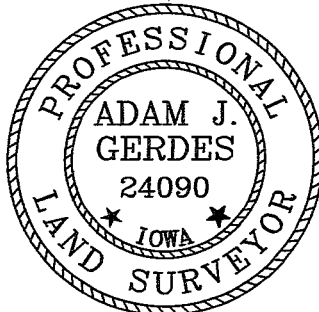
I hereby certify that the survey work was completed and this certificate was prepared by me or under my direct personal supervision and that I am a duly licensed land surveyor under the laws of the state of Iowa.

Signature Adam J. Gerdes
Adam J. Gerdes, PLS

Date: 1/20/22 Lic. No. 24090

My License Renewal Date is December 31, 2022

SEAL



JOB# 7921-1
22-2004

FIELD BOOK 381, PAGE 17

Corners	List Corners to be Indexed		
	Section	Twp	Range
NORTH 1/4 CORNER	9	76N	21W
SOUTH 1/4 CORNER	4	76N	21W

DRAWN BY: BSS

Plate OK - Ret J. Miller

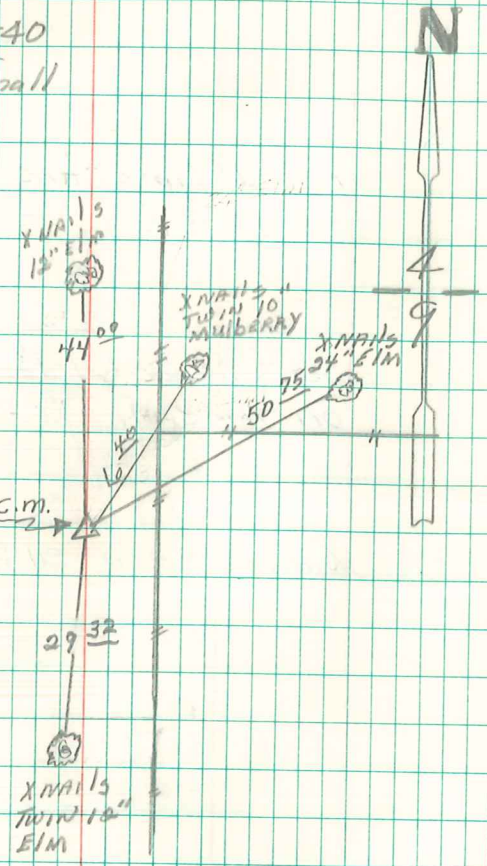
N¹/₄ Cor 9-76-21
Set 7-8-40
Notes: w. g. wall

Found sandstone 20" x 12" x 6"

Set C.M. & placed stone over it

Top of C.M. 13" Deep

REBAR on south
side 60° spike above
put iron post on
EAST side C.M.



RETIRED 19 MAY 93
I. D. O. T.

Found 2 sandstones in area searched and found
WPA Monu 15" deep. Set sandstones to west of Conc Monu
& Put Rebar on South side of Conc Monu & 60° spike
above. Put iron post on east side C.M. Dennis Kinze I.D.O.T.
4/13/2000