

Instr. Number: 23-1038
 BK: 2023 PG: 1038
 Recorded: 3/20/2023 at 9:25:23.0 AM
 County Recording Fee: \$7.00
 Iowa E-Filing Fee: \$3.13
 Combined Fee: \$10.13
 Revenue Tax:
 NAOMI ELLIS, RECORDER
 Marion County, Iowa

RETURN TO: ross LAND SURVEYING, inc. PO Box 336 Johnston, Iowa 50131 515-254-2567

UNITED STATES PUBLIC LAND SURVEY CORNER CERTIFICATE OF

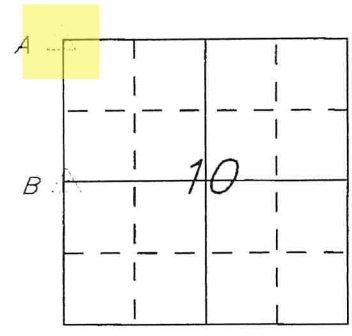
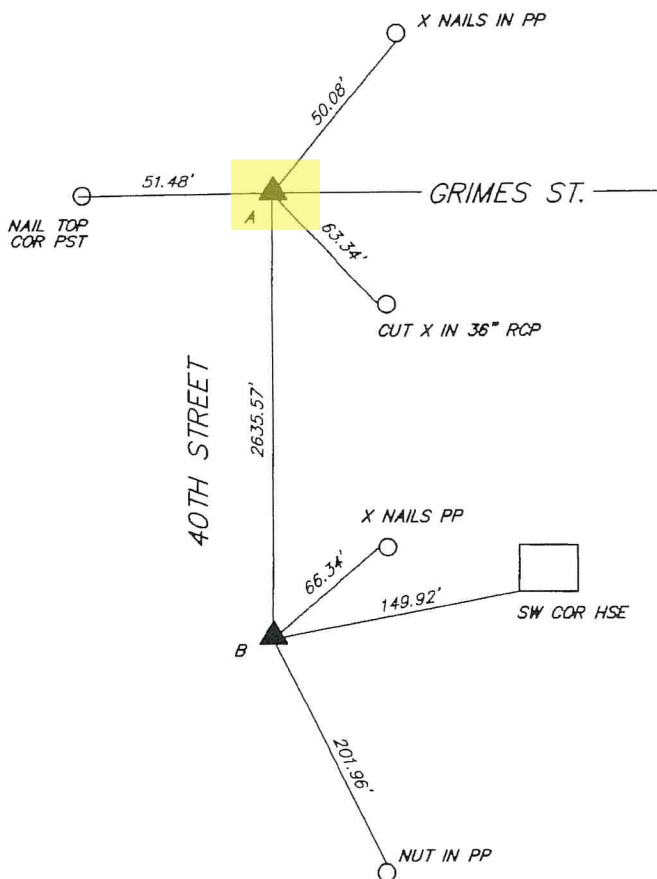
Land survey monuments situated in Section 10, Township 76, Range 21 West of the Fifth Principal Meridian, MARION County, Iowa. Previously recorded in

NW CORNER, NOTE BOOKS IN COUNTY ENGINEERS OFFICE
 WEST 1/4 CORNER, RECORDERS OFFICE BOOK 2008, PAGE 852

MONUMENT DESCRIPTION AND REMARKS:

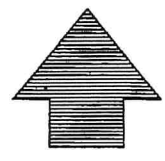
- NW CORNER FOUND MAG NAIL IN PVMT. RETIED SOME TIES MISSING.
 - WEST 1/4 CORNER FOUND MAG NAIL IN PVMT. RETIED SOME TIES MISSING.
- BOTH CORNERS USED TO CREAT NEW LAND DIVISION

PLAN - VIEW



A) NW CORNER SECTION 10, T76N, R21W
 FND MAG NAIL 0.9 EAST OF CENTERLINE
 SPC IA SOUTH N 512793.35
 E 1703079.28

B) WEST 1/4 CORNER SECTION 10, T76N, R21W
 FND MAG NAIL
 SPC IA SOUTH N 510157.78
 E 1703083.82



I HEREBY CERTIFY THAT THIS LAND SURVEYING DOCUMENT WAS PREPARED AND THE RELATED SURVEY WORK WAS PERFORMED BY ME OR UNDER MY DIRECT SUPERVISION AND THAT I AM A DULY LICENSED PROFESSIONAL LAND SURVEYOR UNDER THE LAWS OF THE STATE OF IOWA.

Signed: *[Signature]* Date: 3/20/23

GREGORY L. ROSS Iowa Reg. No. 13286
 My license renewal date is December 31, 2024

CORNER TO BE INDEXED			
Corner	Sec	Twp.	Range
NW	10	76	21W
NE	9	76	21W
SW	3	76	21W
SE	4	76	21W
W1/4	10	76	21W
E1/4	9	76	21W

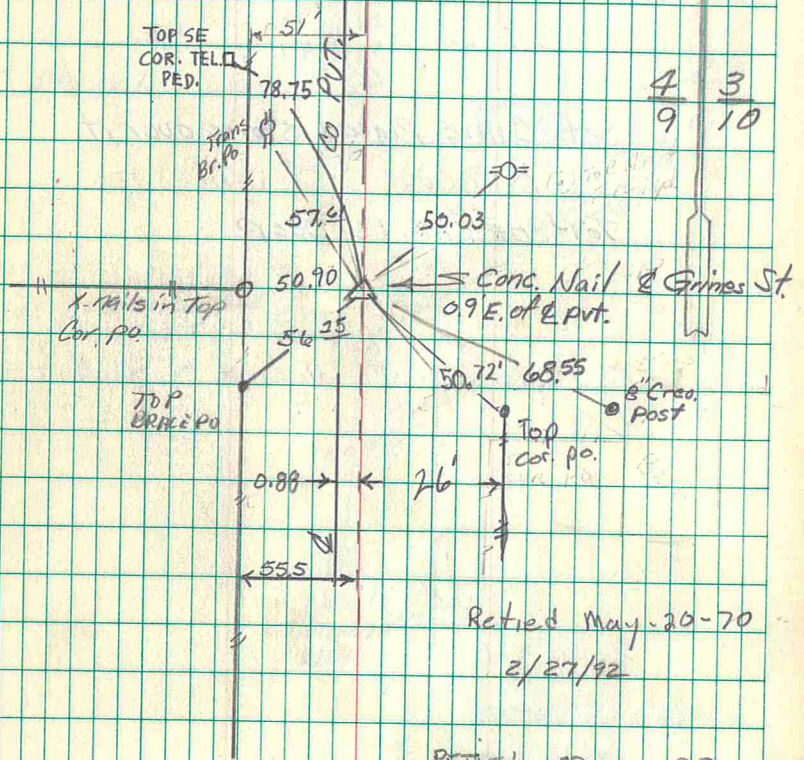
JOB # 8226

Found 2 Field boulders 25"x15"x7"
& 12"x8"x6"

set C.M. over small Stone Larger
one on N. side C.M.

Top of C.M. 15" Deep

N.E. Cor 9-76-21
Set 7-8-40
Notes: Wignall



4	3
9	10

Retied May-20-70
2/27/92

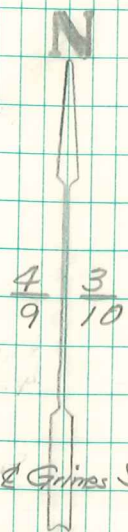
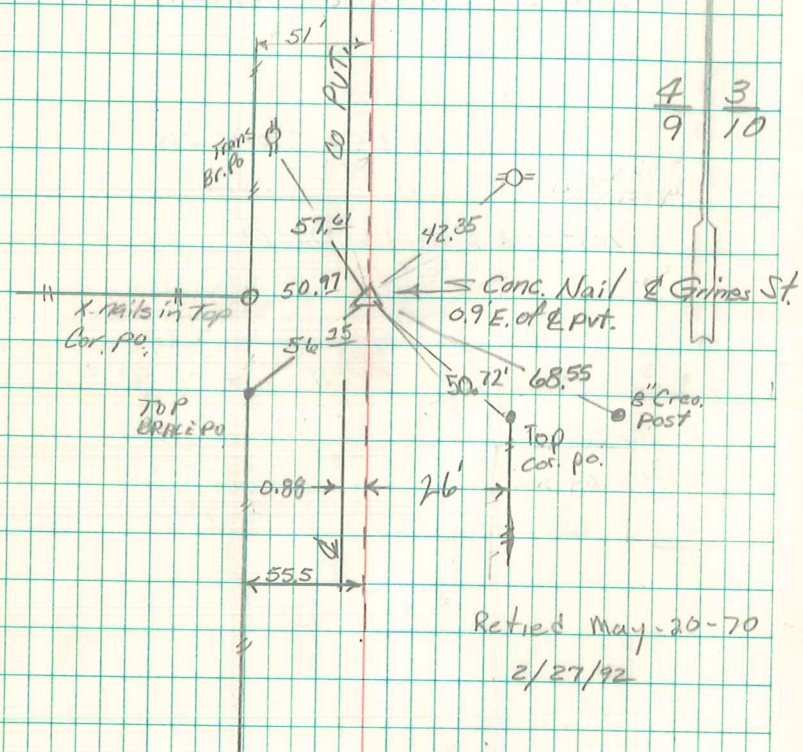
RETIED 27 May 93
IDOT
4/13/2000 IDOT
Dennis KUNZE
6/4/01 Abie Davis
HARH SCHIPPERS 5/24/21

Found 2-Field boulders 25"x15"x7"
& 12"x8"x6"

Set C.M. over Small Stone Larger
one on N. side C.M.

Top of C.M. 15" Deep

N.E. Cor 9-76-21
Set 7-8-40
Notes: Wignall



RETIED 27 MAY 93
I D O T
4/13/2000 I.D.O.T.
Dennis KUNZE
6/4/01 Abie Davis