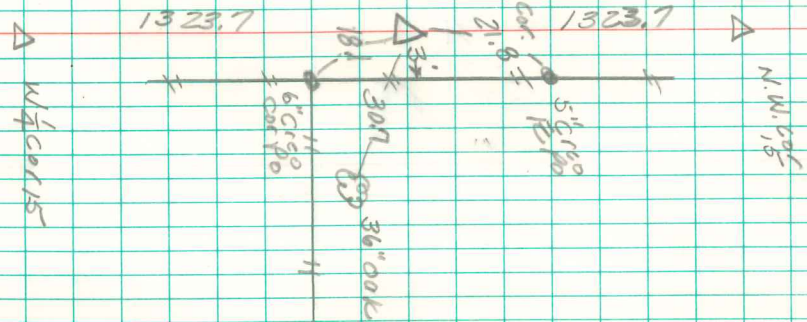


S.W. Cor - N.W. - N.W. Sec 15 - 77-18



Established corner
 Midway bet. W & N.W. cor
 By Gordon Eng
 Jan 13 - 1986

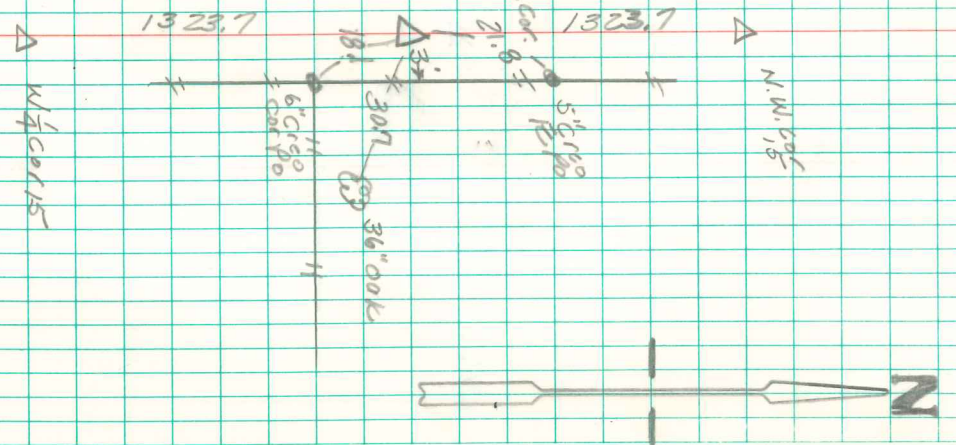
CM Falls 100' N. of splice in
 Fence wire. Set 1 1/2" x 3/4" Pipe (LLS 6708)
 exposed 3"

7/3/80

Ronald Neffern

S.W. Cor - N.W. - N.W. Sec 15 - 77-18

Establ. shed corner
Midway bet. lot N.W. cor.
By Gordon Eng
Jan 13 - 1986



CM Falls 100' N. of splice in
Fence wire. Set 1 1/2" x 3/4" Pipe (LLS 6708)
exposed 3"

7/3/00
Ronald Neffern