

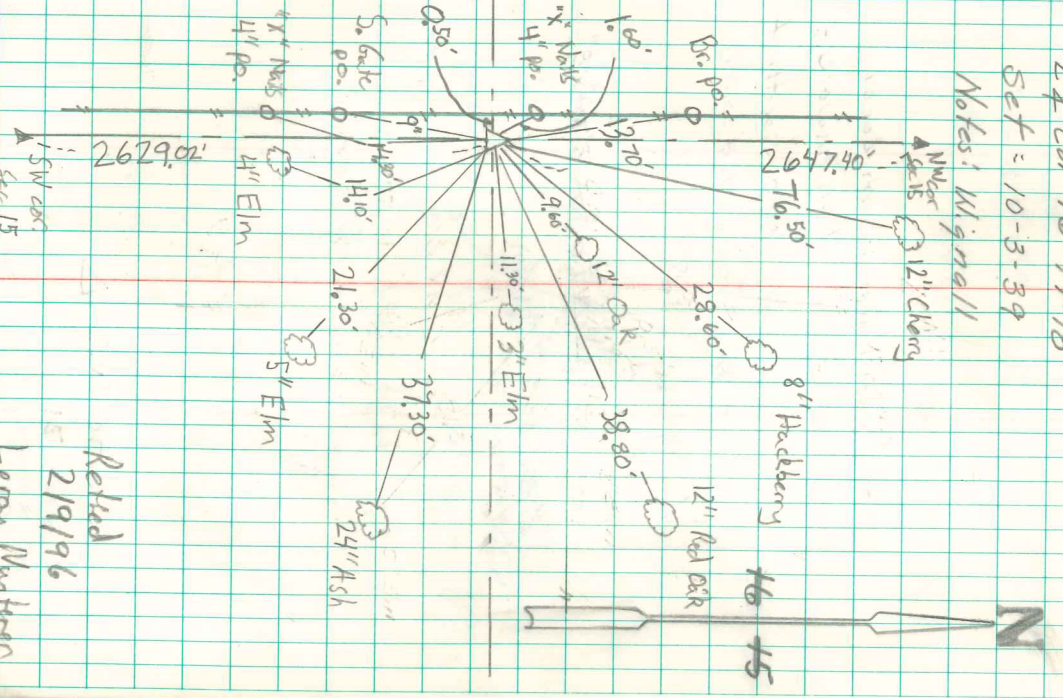
Found Broken Tile around Car  
 Past Under Ground, Henry Bensink  
 Tolme, D.L. Thomas, that H's  
 Hire man Dug Tile out when He  
 Set Car P.

Set C.M. over Broken Tile 0.5' West  
 of 12" Cor P.

Feb 9, 1996 Found broken Conc. Man, Base 12"  
 deep w/bent 1" re-bar on North Side. Set  
 5/8" x 30" re-bar on West side Conc. Man.

E 1/2 Cor 16-77-1B  
 Set = 10-3-39

Notes: W. sign 11



Retrad  
 2/9/96  
 Leroy Magham