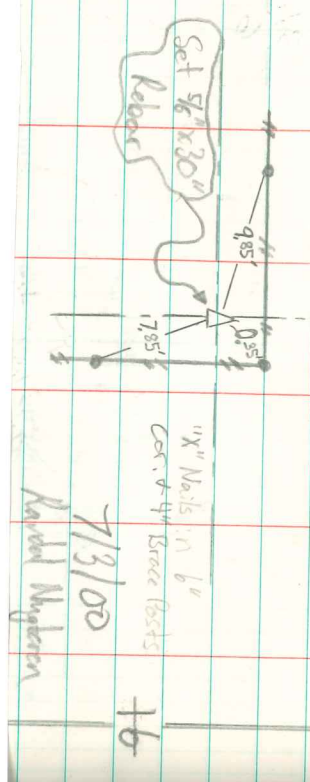




① NW cor. SE-NE Sec. 16-77-18

Set at midpt. of line between E 9⁴ & W¹⁴ corners of NE⁴ Sec. 18.



11" Nails in 6" Cor. of 4" Stone Posts

7/3/00

Harold Nygren

N

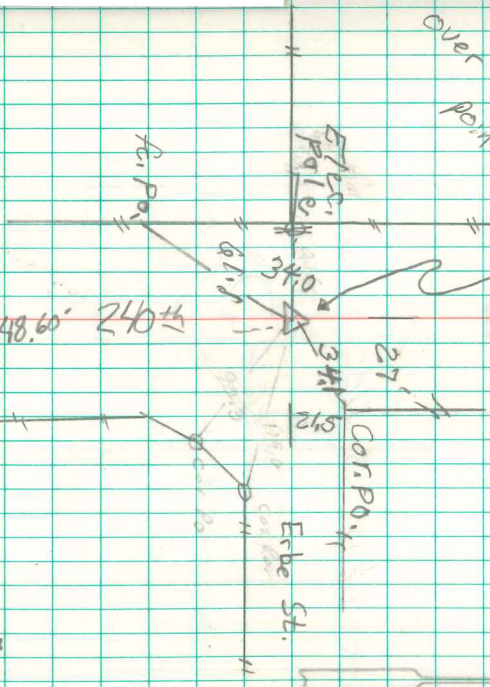
N.E. Cor 35-77-18

Set -

Notes - D.L. Thomas

Find. 4 1/2" Iron Nail
Large Stone Top
Over Point

Place



2648.60' 240 ±

15" Deep

Found 70⁺ SPK. w/Flag
1/4" 10⁺ per large rock
w/ point on top
Set 1/2" riv. rod over
stone 4-8-86

INDICATED
FLAG
IN DRYS

26 25
35 36

N

K.C.N.