



Document 20-4119

Book 2020 Page 4119 Type CORNR Pages 1
Date 7/29/2020 Time 12:53 PM
Rec Amt \$7.00



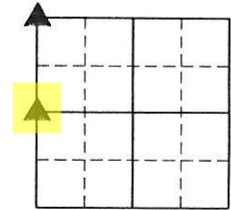
GARDEN & ASSOC.

P.O. Box 451, Oskaloosa, Iowa 52577-0451 Phone: (641)672-2526

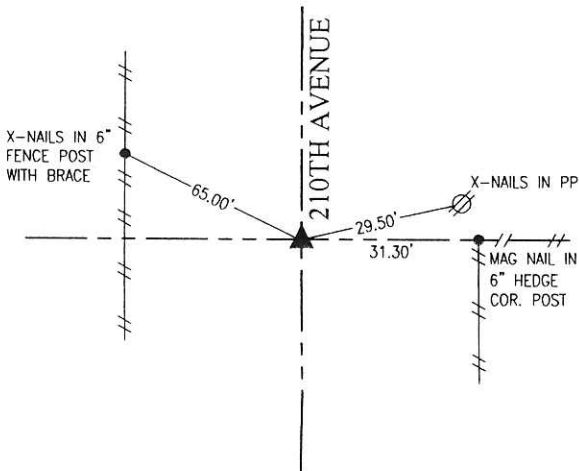
KAREN SCHWANEBECK, RECORDER
MARION COUNTY IOWA

UNITED STATES PUBLIC LAND SURVEY CORNER CERTIFICATE
OF

Land Survey Monuments situated in Section 16, Township 77, Range 18, of the Fifth Principal Meridian, MARION County, Iowa. Previously recorded in NO CERTIFICATE OF RECORD in County Recorder's Office. Monument Description and Remarks: SEE BELOW

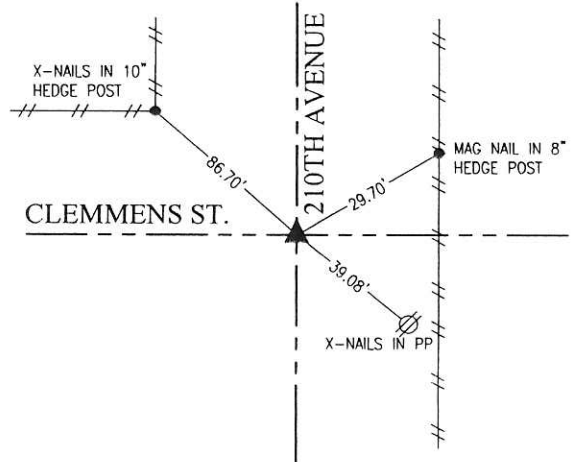


NW CORNER



OCTOBER 1990 PLS 6708
FOUND WPA CONCRETE MONUMENT 18" DEEP IN LINE WITH FENCE EAST AND SLIGHTLY EAST OF CENTER OF ROAD.
SET 5/8" X 30" REBAR ON NORTH SIDE OF C.M. AND 5/8" X 10" REBAR 4" DEEP ABOVE C.M.
SET 60D NAIL AND BLUE TOP AT SURFACE.
JULY 21, 2020
FOUND 60D NAIL 5" DEEP ABOVE WPA CONCRETE MONUMENT 24" DEEP.

WEST 1/4 COR.



FEBRUARY 1984 PLS 6708
FOUND WPA CONCRETE MONUMENT 7" DEEP.
SET 1"X24" PIPE ON NORTH SIDE OF C.M.
SET 60D NAIL AND BLUE TOP AT SURFACE.
JULY 21, 2020
SET 5/8" X 12" REBAR ABOVE WPA CONCRETE MONUMENT FOUND 14" DEEP.

I hereby certify that this land surveying document was prepared and the related survey work was performed by me or under my direct personal supervision and that I am a duly licensed Professional Land Surveyor under the laws of the State of Iowa.

Randal J. Nugteren July 23, 2020
Randal J. Nugteren, P.L.S. Date
License number: 14416
My license renewal date is December 31, 2020

SEAL



List Corners to be Indexed			
Corners	Section	Township	Range
NW CORNER	16	77	18
WEST 1/4 CORNER	16	77	18

Vol. 7-CW Plat Garden Assoc. - Enw

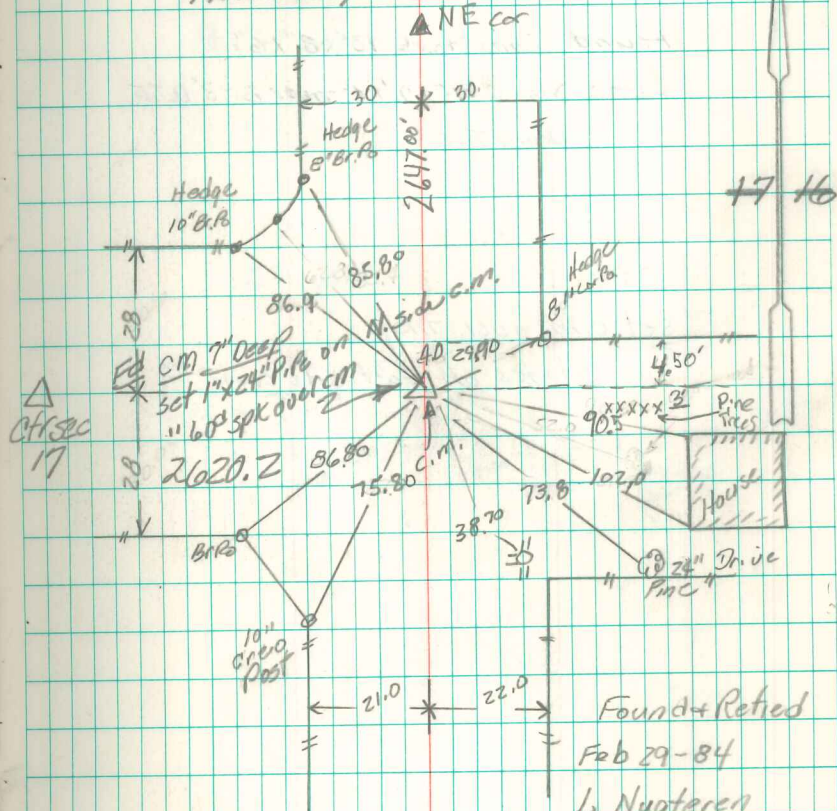
Found 2" lime stone 12"x6"x3" &
12"x5"x2" over 1-2" round tile

Set C.M. over tile Horiz - N45.
Stone on South side

E 1/4 cor 17-77-18

Set - 10-25-39

Notes - Wignall



Found + Retied
Feb 29-84
L. Nuorten
J. Riggan

5/8/02 Abie Davis