

Restablished on old Fence line

Set man over 1-2" Horse-Shoe Tie

Put a Grant Rock 12"x10"x6" on top min.

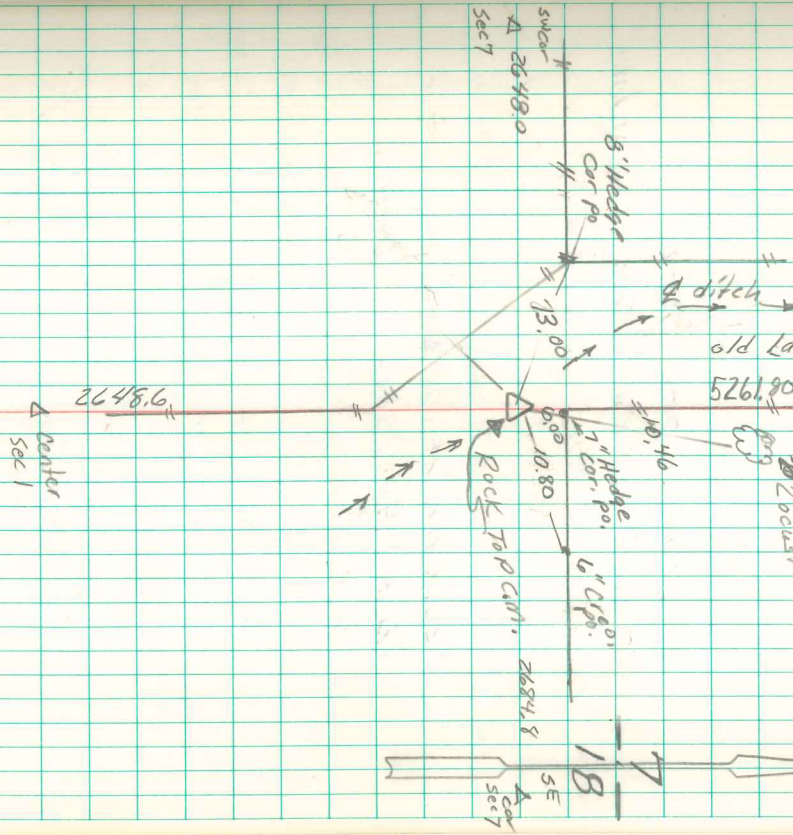
- 52x4' N.E. of X Marks in 4" Locust tree
- 23x5' S.E. " " " " 6" Elm "
- 2x5' South " " " " 10" Locust "
- 192.1' West " " " " 12" Elm "

N<sup>1</sup>/<sub>2</sub> Cor Sec 18-77-18

Set July 3-1941

Notes: Kennedy - Wells, Glass #

Marshall



Reset CM 12" above gc in bottom of ditch  
 Set 5/8 iron pin w/cap # 5594 beside CM.  
 Abie Davis 1/17/02