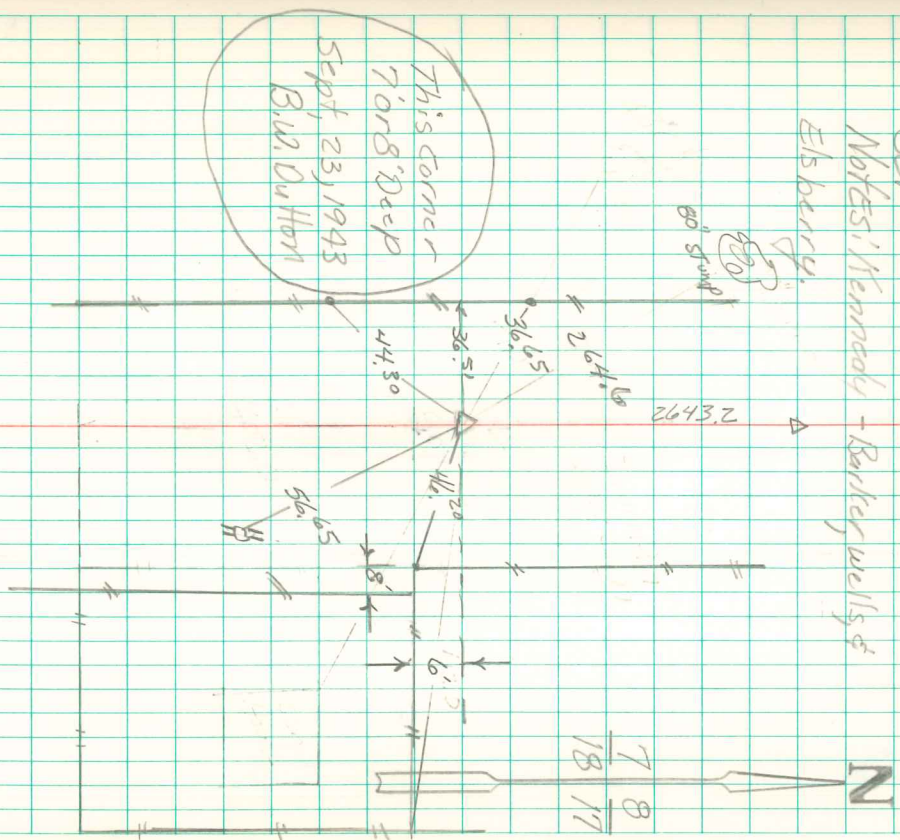


Established the N.E. cor 18-77-18 chained  
 South on East side 7-77-18, 2655 to 1/4 cor  
 5298 to sec line Fence West. Chained west-  
 on North side 17-2636 From North East  
 Cor sec. to N 1/4 cor 17-2624 From North  
 1/4 cor to center of road at North E. cor 18-  
 77-18 - 2695.0 E 1/4 cor 18 to sec line Fence E.  
 1330.0' From E 1/4 cor to 1/2 cor. Fence East  
 1315.0' From 1/2 cor Fence E. to N. sec line.  
 Lines and measurements all came to a point  
 in deep road cut, there is a sharp  $\Delta$  in line  
 on East side 7' at 1/4 cor, as a line Produced  
 South From N.E. cor & E 1/4 cor. comes in East  
 Fence line, line Produced N. From E 1/4 cor. 18.  
 Ets center of 44' Right way at 1/4th cor Dug hole  
 12' x 12' in ctr Road on old Est. Fence line  
 which present owner land east said was  
 Sec. line. Found no evidence, Cor is in 7'  
 road cut, & probably Destroyed.  
 Established on above measurements &  
 line & set G.M. with broken Cracker  
 under it.

N.E. Cor Sec 18-77-18

Set  
 Notes: Kennedy - Barkley wells &  
 Elsberry.



Set 5/8" iron pin w/cap  
 A.O. Davis 11/8/01