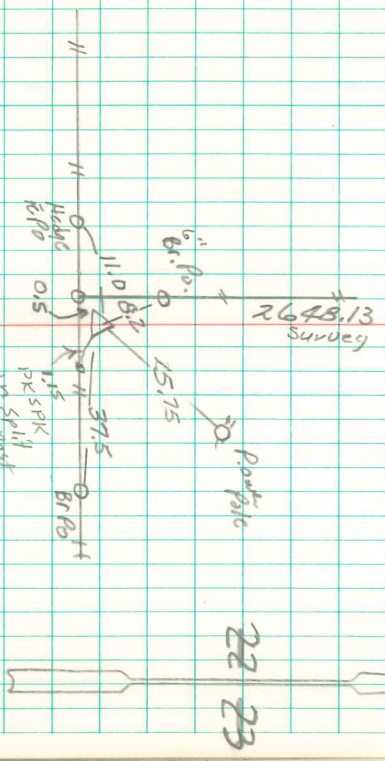


W¹ Cor Sec 23-77-18
 Estbl. shed By Gordon ENG.
 By Napfery, or Held & Campbell
 Apr. 18-1976

△ N.W. cor
 Sec 23



Survey
 2648.13

0.2. Set by Participants
 Distance to cor 1/2 mile
 South 1/2 mile North

Set Cor. EX Posed

△ S.W. cor Sec 23

Found & Rethel
 10/23/99