



Document 21-511

Book 2021 Page 511 Type CORNR Pages 1

Date 1/22/2021 Time 12:32 PM

Rec Amt \$7.00



GARDEN & ASSOC.

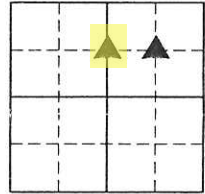
P.O. Box 451, Oskaloosa, Iowa 52577-0451 Phone: (641)672-2526

KAREN SCHWANEBECK, RECORDER  
MARION COUNTY IOWA

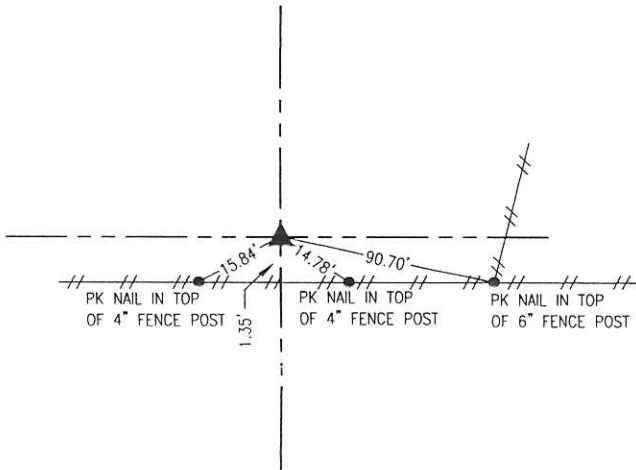
UNITED STATES PUBLIC LAND SURVEY CORNER CERTIFICATE

OF

Land Survey Monuments situated in Section 28, Township 77, Range 18, of the Fifth Principal Meridian, MARION County, Iowa. Previously recorded in NO CERTIFICATE OF RECORD in County Recorder's Office. Monument Description and Remarks: SEE BELOW

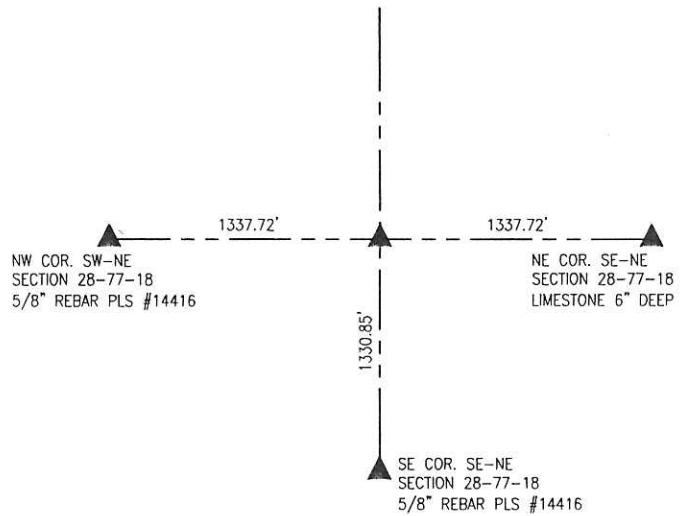


NW CORNER  
SW 1/4-NE 1/4



DECEMBER 4, 2020  
SET 5/8" X 30" REBAR WITH CAP #14416 ON LINE AND MIDWAY BETWEEN CENTER AND NORTH 1/4 CORNER OF SEC. 28.

NW CORNER  
SE 1/4-NE 1/4



DECEMBER 4, 2020  
SET 5/8" X 30" REBAR WITH CAP #14416 ON LINE AND MIDWAY BETWEEN NW CORNER SW-NE AND NE CORNER SE-NE.

I hereby certify that this land surveying document was prepared and the related survey work was performed by me or under my direct personal supervision and that I am a duly licensed Professional Land Surveyor under the laws of the State of Iowa.

*Randal J. Nugteren* January 13, 2021  
Randal J. Nugteren, P.L.S. Date

License number: 14416  
My license renewal date is December 31, 2022

SEAL



List Corners to be Indexed			
Corners	Section	Township	Range
NW CORNER SW 1/4-NE 1/4	28	77	18
NW CORNER SE 1/4-NE 1/4	28	77	18

*Pd #700-ck - Bot Garden & Assoc. Env.*