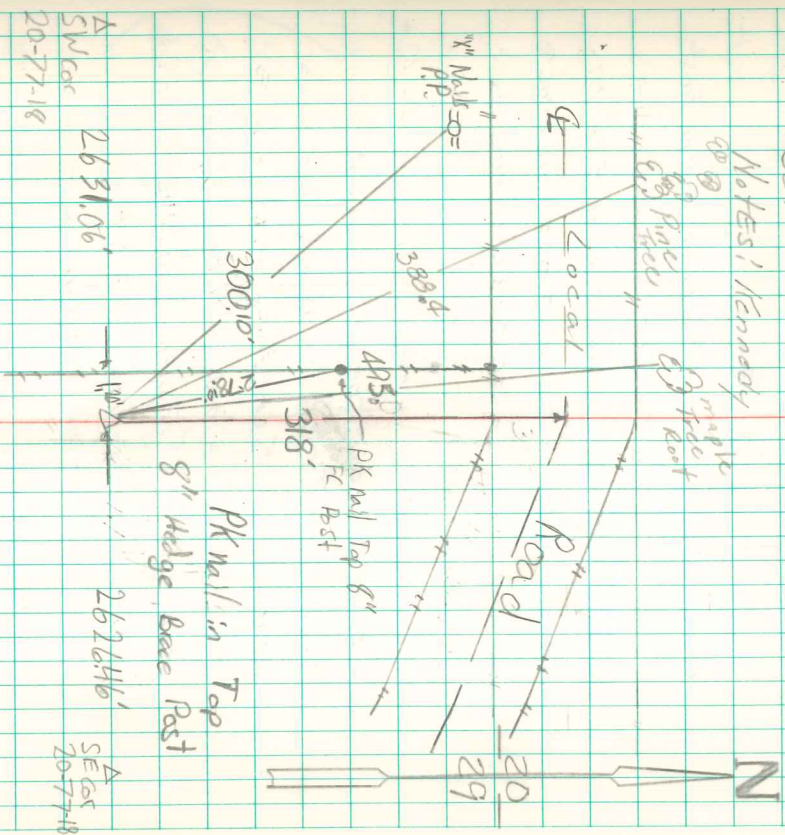


N 1/4 Cor Sec 29-77-18

Self

Notes: Kennedy

1/2" iron bar on line at midpoint between NW corner & NE corner as described procedure by upper crew in March 1941



A SW cor 20-77-18

A SE cor 20-77-18

12/17/01 Randa Nelson

Ran a Random Line West on N. Side of 29
Intersect W. sec line 156.4' North
of Stone & C.M. Corrected at midpoint
on North & South D.10. Fences dug Hole
10x20x3' Deep along Fence. Found
No Evidence of corner.
Establish corner on right line between
Sections corners. & on line with old Hedge
Fence Row running west from N.E. corner
and on line with old estab. Division Fence
Running south to cen. sec.
Set C.M. 12" Below Surface
495.0' S. 10° East of x Nails in maple Tree
388.4' South 45° " " " " Pine "
297.1' " " " " " " Cor Post set R
11.8' South " " " " S.S. & Hedge R.
3.4' " " " " " NS. 4° " "

2658.0' North of Fence cor at Cor Sec 29
2670.0' South " " " " Cor Sec