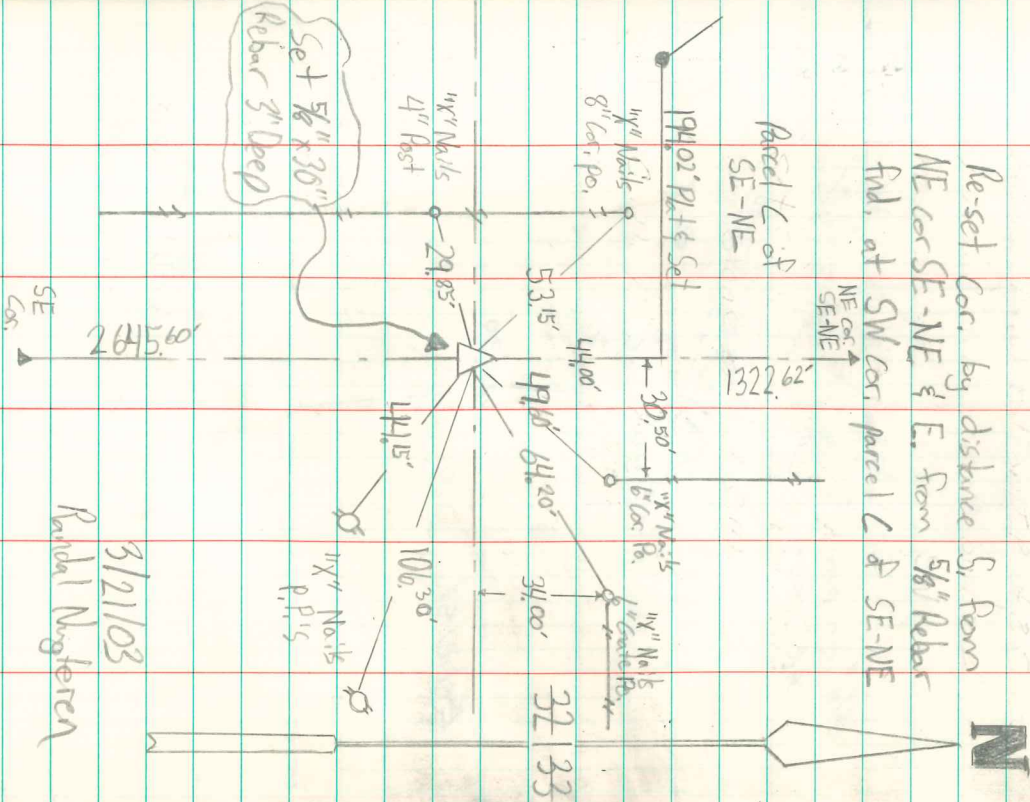


E¹ Cor. Sec. 32-77-18

2/26/03 - Road surface Parcel sign: 1/4 acre

Re-set Cor. by distance S, from
NE cor SE-NE $\frac{1}{4}$ E. from $\frac{5}{8}$ " Rebar
fnd. at SW cor parcel C & SE-NE



3/21/03
Randall Nygteren

E¹ Cor 32-77-18

Set - 6-23-41

Notes = W.ignall

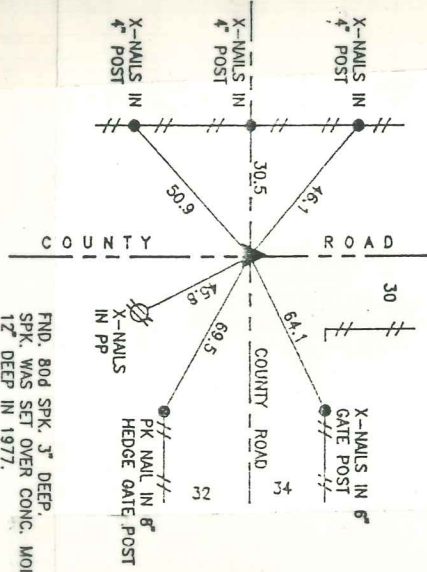
fnd. Rebar at on top of 2 stones, 1-lime stone

Basin over 2-2" round tile.

Set C.M. on Top 1-2" round tile, Set stone

on top C.M. 12" Deep

E. 1/4 COR.
32-77-18



FND. 804 SPK. 3" DEEP.
SPK. WAS SET OVER CONC. MON.
12" DEEP IN 1977.

RETTED 15 JULY 1993
LEROY NYGTEREN

New Tre