



Document 21-7021

Book 2021 Page 7021 Type CORNR Pages 1
Date 11/04/2021 Time 12:20 PM
Rec Amt \$7.00



GARDEN & ASSOC.

P.O. Box 451, Oskaloosa, Iowa 52577-0451 Phone: (641)672-2526

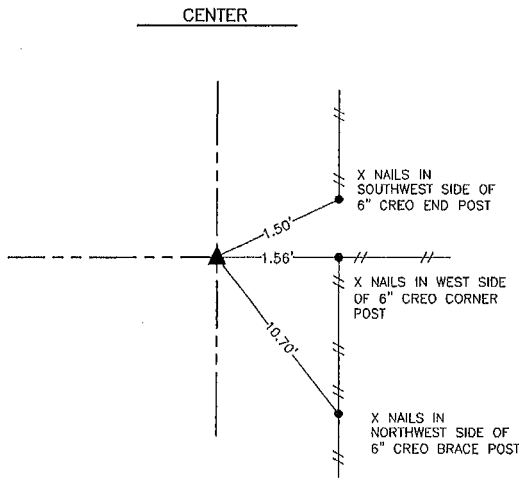
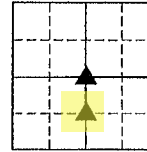
KAREN SCHWANEBECK, RECORDER
MARION COUNTY IOWA

UNITED STATES PUBLIC LAND SURVEY CORNER CERTIFICATE

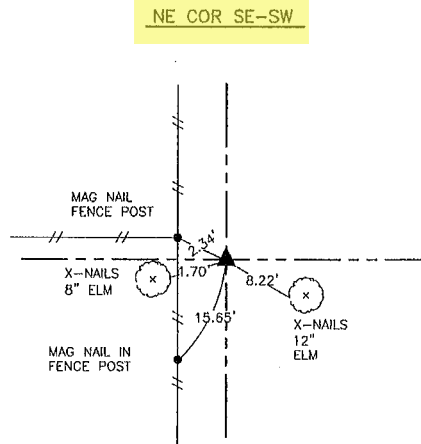
OF

Land Survey Monuments situated in Section 35, Township 77, Range 18, of the Fifth Principal Meridian, MARION County, Iowa. Previously recorded in NO CERTIFICATE OF RECORD in County Recorder's Office.

Monument Description and Remarks: SEE BELOW



FEBRUARY 18, 2021
SET 3/8" REBAR WITH YELLOW PLASTIC CAP PLS # 19960 AT THE INTERSECTION OF LINE CONNECTING OPPOSING 1/4 CORNERS. THIS POSITION MATCHES THE LOCATION USED BY LS 7995 TO CALCULATE THE NE CORNER OF THE SE-NW AS SHOWN ON BOOK 2 ON PAGE 142.



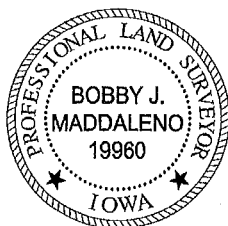
FEBRUARY 18, 2021
SET 3/8" REBAR WITH YELLOW PLASTIC CAP PLS # 19960 MIDWAY BETWEEN THE CENTER AND SOUTH 1/4 CORNER OF SEC. 35-77-18.

I hereby certify that this land surveying document was prepared and the related survey work was performed by me or under my direct personal supervision and that I am a duly licensed Professional Land Surveyor under the laws of the State of Iowa.

Bobby J. Maddaleno 11-1-21
Bobby J. Maddaleno, P.L.S. Date

License number: 19960
My license renewal date is December 31, 2021

SEAL



List Corners to be Indexed			
Corners	Section	Township	Range
CENTER	35	77	18
NE COR SE-SW	35	77	18

Pl # 7021, Ret. Garden & Associates, env.