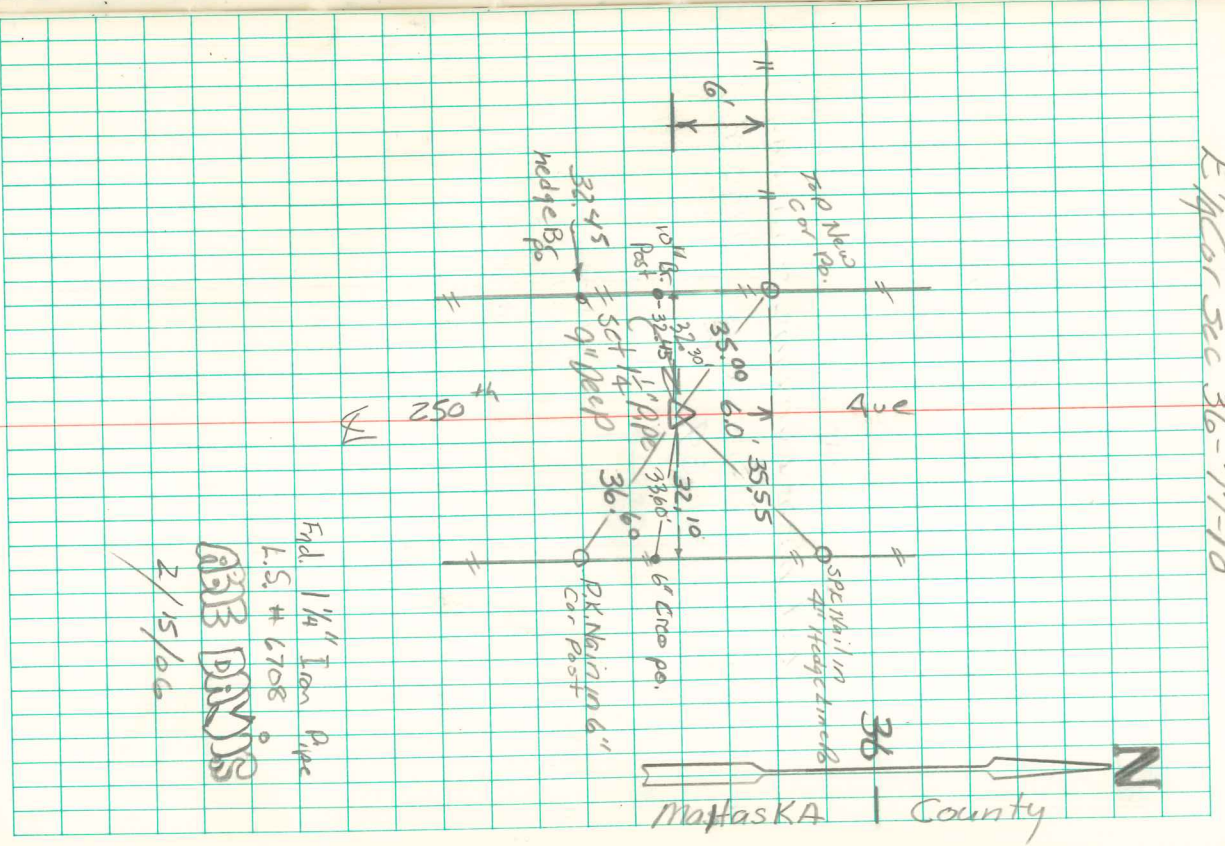


Established by
Nugteren & Schmidt (Garden ENG.)
May - 25 - 1973

Established at INT. of E-W 1/4 line
and West line of Sec 31-77-17

2636.8' N. to NW Cor 31-77-17
2631.4' S. to SW. " 31-77-17

E 1/4 Cor Sec 36-77-18



Field 1/4" Iron Pipe
L.S. # 6708
2/15/06

36
Mottaska County