



Document 17-2120

Book 2017 Page 2120 Type CORNR Pages 1
Date 5/22/2017 Time 10:13 AM
Rec Amt \$7.00

KAREN SCHWANEBECK, RECORDER
MARION COUNTY IOWA

Prepared by Abie C. Davis, P.E. & L.S., 1428 Oregon St., Knoxville, IA 50138 (641) 842-5863

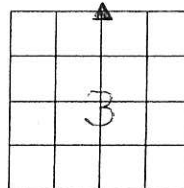
UNITED STATES PUBLIC LAND SURVEY CORNER CERTIFICATE OF

Land survey Monuments situated in Section 3, Township 77N, Range 18W, of the Fifth Principal Meridian, Marion County, Iowa.

Previously recorded in N/A in County Recorders Office.

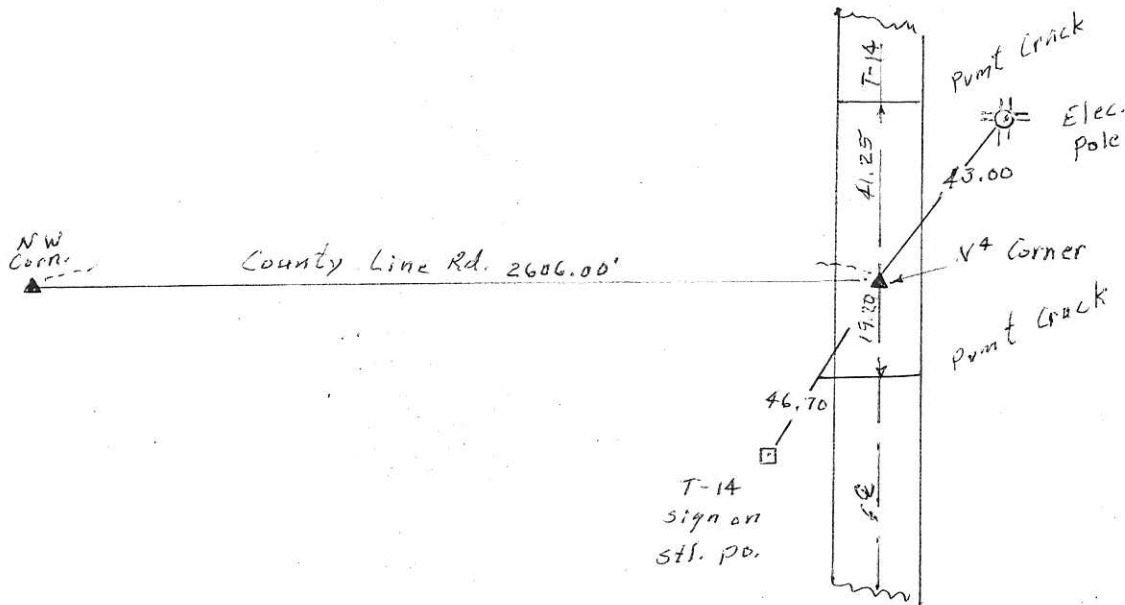
Show reason for preparing this certificate, the evidence and detailed procedures used in establishing the corner positions and monumentation found or placed.

Monument Description and Remarks: Found Iron Pin
on E pvmt flush with surface over lead
plug.



PLAN - VIEW

(Show a minimum of three reference ties to durable physical objects, relevant monuments and physical conditions that will enable recovery of the corner.)

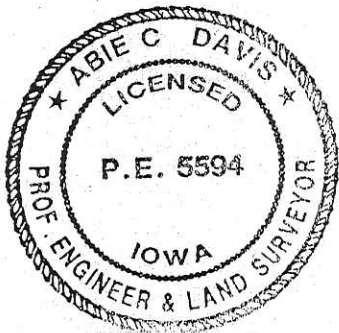


I hereby certify that the survey work was completed and this land surveying document was prepared by me or under my direct personal supervision and that I am a duly licensed land surveyor under the laws of the state of Iowa

Signature: Abie C Davis
Abie C. Davis, P.E. & L.S.
Date: 5/15/17 Reg. No. 5594

My license renewal date is December 31, 2017

SEAL



List Corners to be Indexed

Corners	Section	Twp	Range
N4	3	77N	18W

Pd \$700 Cash - Ret Abie Davis

