

Dug hole 8'x12'x4' - 10-22-40
Found no evidence of stone or
mematerials

Reestablished Cor. by Presumptive
or Local Evidence

Set C.M. over 1-2" Tile

N $\frac{1}{4}$ Cor 26-77-19

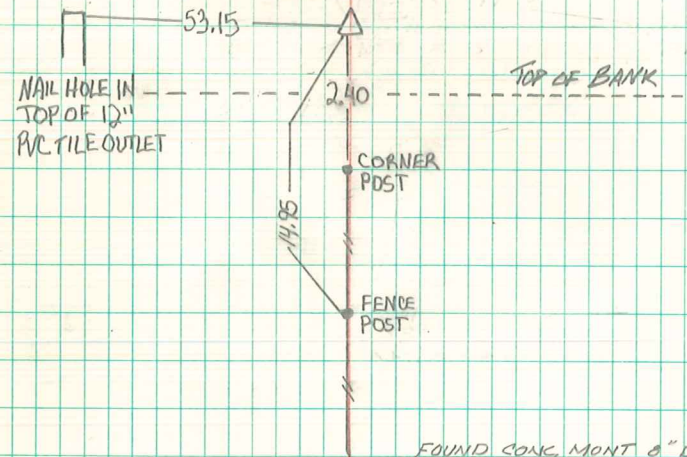
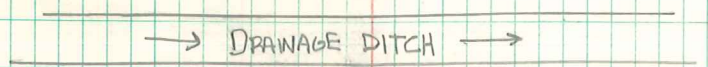
Set 10-24-40

Notes - Kennedy

Party - Mandell - Frazier & Elsberry

N

28
26



FOUND CONC MONT 8" DEEP
10/6/92
RE-TIED 2/26/13
BRIAN MORRISSEY