

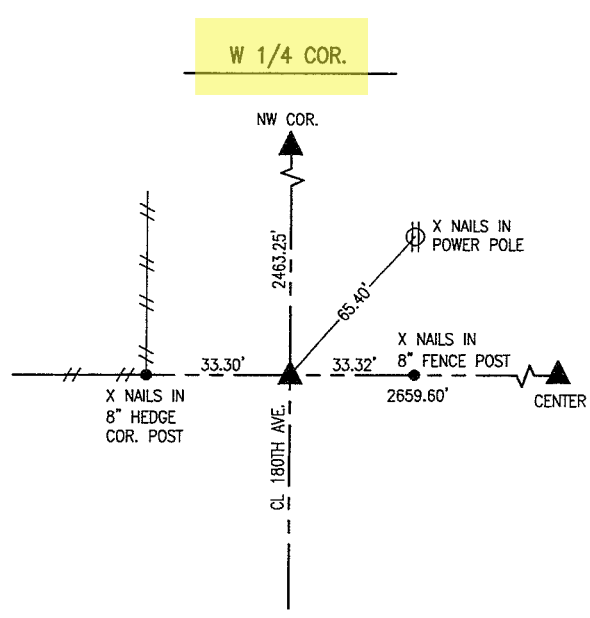
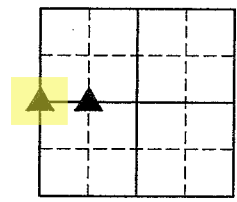
NAOMI ELLIS, RECORDER
 MARION COUNTY IOWA

G GARDEN & ASSOC. P.O. Box 451, Oskaloosa, Iowa 52577-0451 Phone: (641)672-2526

UNITED STATES PUBLIC LAND SURVEY CORNER CERTIFICATE

OF

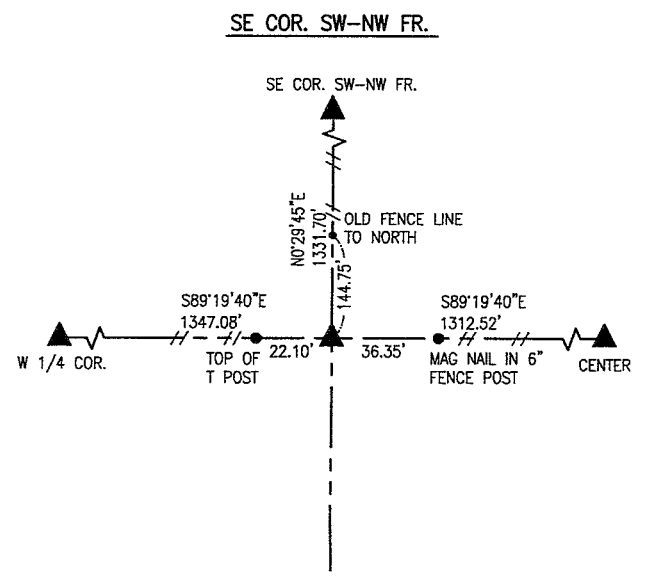
Land Survey Monuments situated in Section 1, Township 77, Range 19, of the Fifth Principal Meridian, MARION County, Iowa. Previously recorded in NO CERTIFICATE OF RECORD in County Recorder's Office. Monument Description and Remarks: SEE BELOW



OCT. 22, 1940-MARION COUNTY:
 FOUND 2 STONES, WAGON HUB, AND A 2-1/2" HORSESHOE TILE. SET C.M. ON TOP OF 2-1/2" TILE IN PLACE. SET STONE ON SOUTH SIDE OF C.M. AND WAGON HUB ON EAST SIDE OF C.M. ALSO SET STONE ON TOP OF C.M.

DEC. 30, 1996-PLS 5594:
 FOUND 2" HUB OVER C.M. SET 5/8" IRON PIN 4" DEEP OVER C.M.

DEC. 5, 2022-PLS 14416:
 FOUND 5/8" REBAR 4" DEEP.

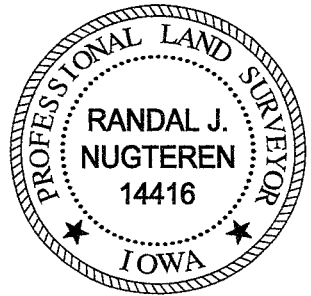


JAN. 26, 2022-PLS 14416:
 SET 5/8" X 30" REBAR WITH YPC #14416 AT INTERSECTION OF LONG STANDING FENCE LINE NORTH WITH LINE BETWEEN CENTER AND W 1/4 CORNER.

I hereby certify that this land surveying document was prepared and the related survey work was performed by me or under my direct personal supervision and that I am a duly licensed Professional Land Surveyor under the laws of the State of Iowa.

Randal J. Nugteren April 1, 2023
 Randal J. Nugteren, P.L.S. Date
 License number: 14416
 My license renewal date is December 31, 2024

SEAL



List Corners to be Indexed			
Corners	Section	Township	Range
W 1/4 COR.	1	77	19
SE COR. SW-NW FR.	1	77	19

PLS OK - Ret Garden & Assoc

Found 2 Stone, wagon Hub &
1-2½" A tile

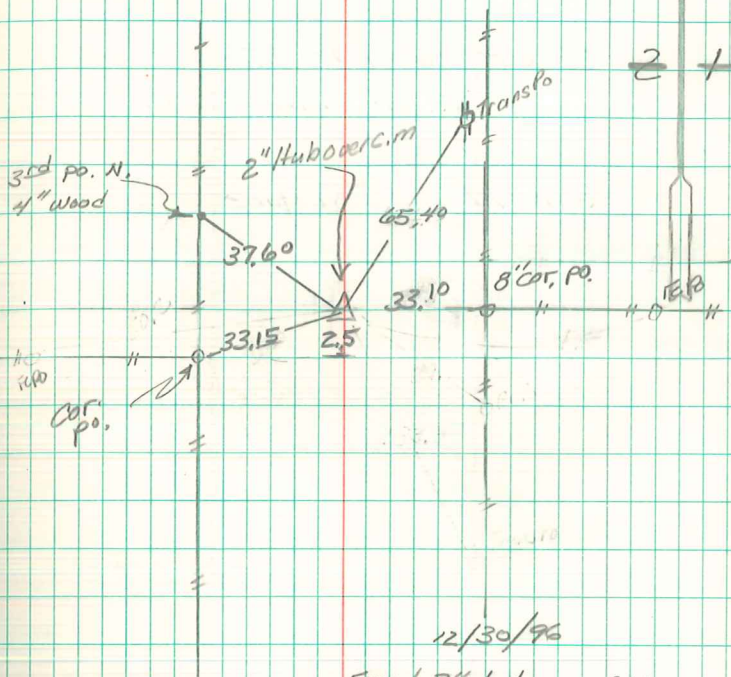
set c.m. on top of 2½" tile in place
set stone on south side c.m. &
wagon Hub on east side of c.m.
also set stone on top of c.m.

E ¼ Cor 2-77-19

Set-10-22-40

Notes- Wignall

Party- Shore-mitchell



12/30/96
Found 2" hub over c.m.
set 5/8" iron pin 4" deep
over c.m. Abie Davis