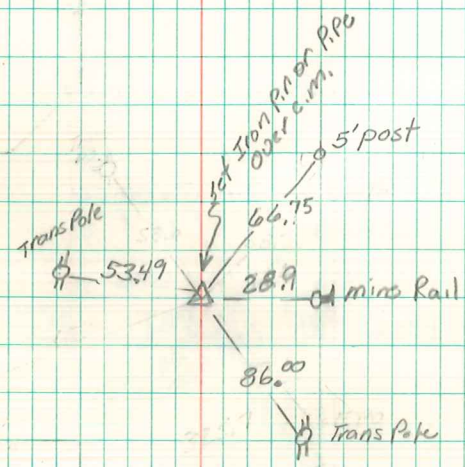


E $\frac{1}{4}$  Car 31-77-19  
 Set 9-18-40  
 Notes - Kennedy  
 Party = Sharp - Mitchell & Targer



C.M. 5' Deep  
Top Broke off

Found Retired by Corps  
 July - 1979  
 Found C.M. 5' Below Surface  
 C.M. 11, D. Fulton & Robinson  
 Retired Feb 7, 1979  
 64.7' N.E. to mine Rail  
 28.9' E. to mine Rail  
 69.2' S.E. to Trans Pole  
 53.7' W.N.W. to Trans Pole  
 Found & Retired 11/23/99  
 Brian Morrissey