

Found Buggy AXle drove down
through 2-3" Δ tile, set man
over evidence as we found it.

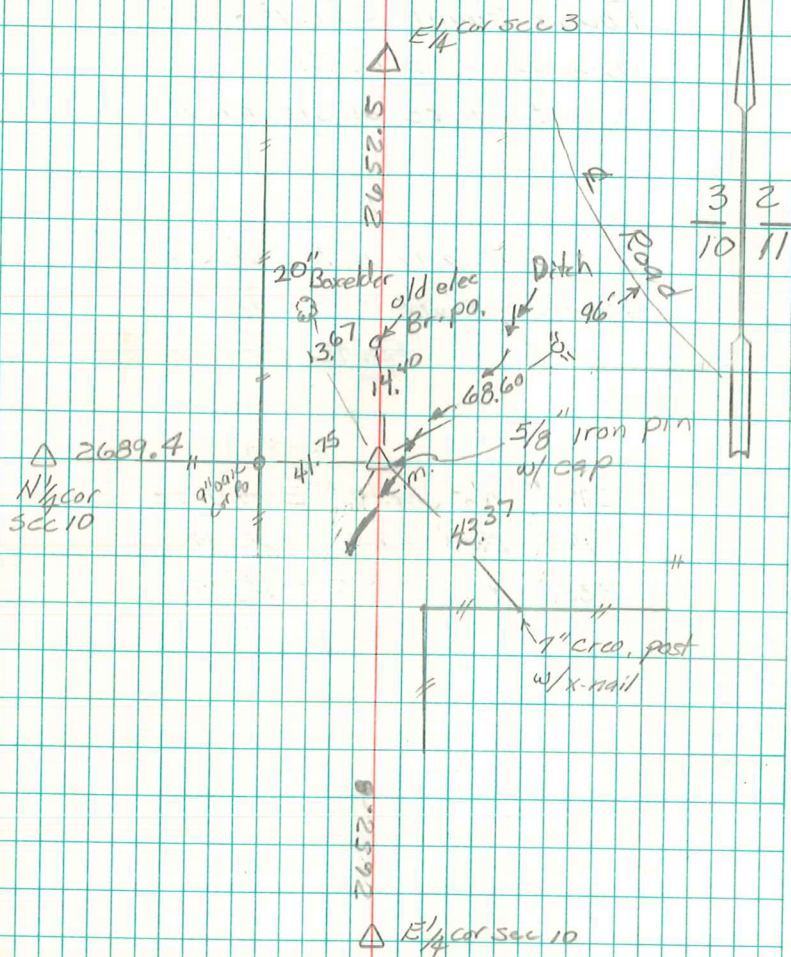
Set C.M. over ALL. To P.C.M. 4"
above surface.

20.1' N.E. of 8" willow tree
30.8' East " 9" oak cor. Po.
46.9' S.W. " Cor Post.

N.E. Cor Sec 10-77-20

Set: 8-30-40

Notes: Kennedy - share, mitchell, ogden



Found & Retied 11/28/06
Alic Davis