

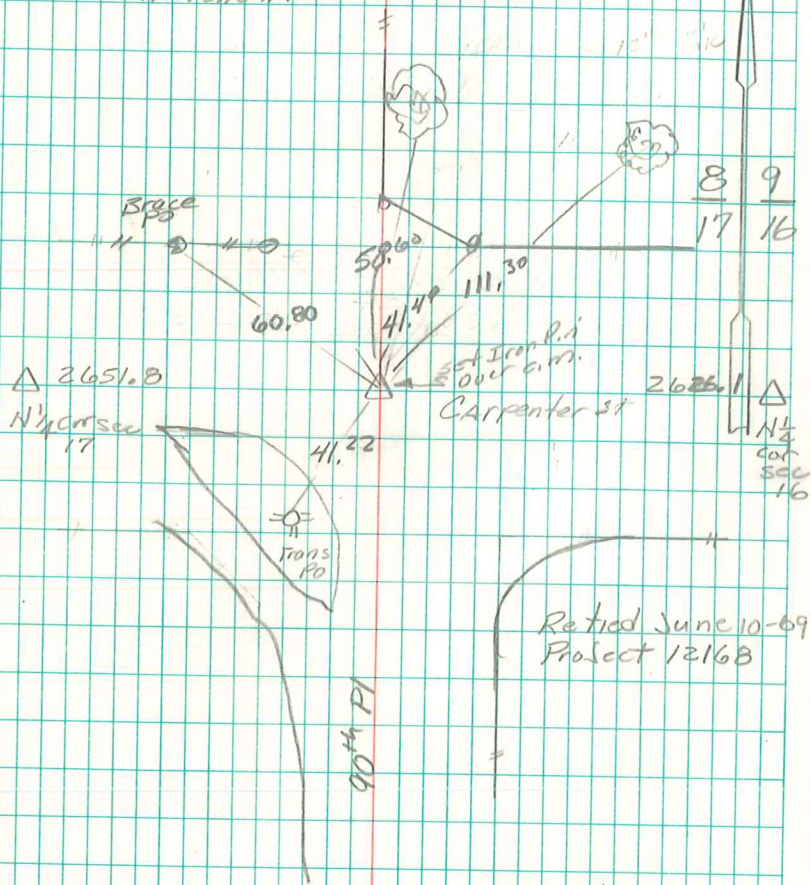
Found 2½-3" Tile Filled with Conc
 over 2-1½" O Tile. Set men Right
 where we Found Tile

Set c.m. on one 1½" Tile standing on END

N.E. Cor. sec 17-77-20

Set 8-31-40

Notes: Kennedy - Shore, Ogden's
 Mitchell.



Craig Johnston 5/30/06

5 1/4 - SW 1/4 Cor 8-77-20

