

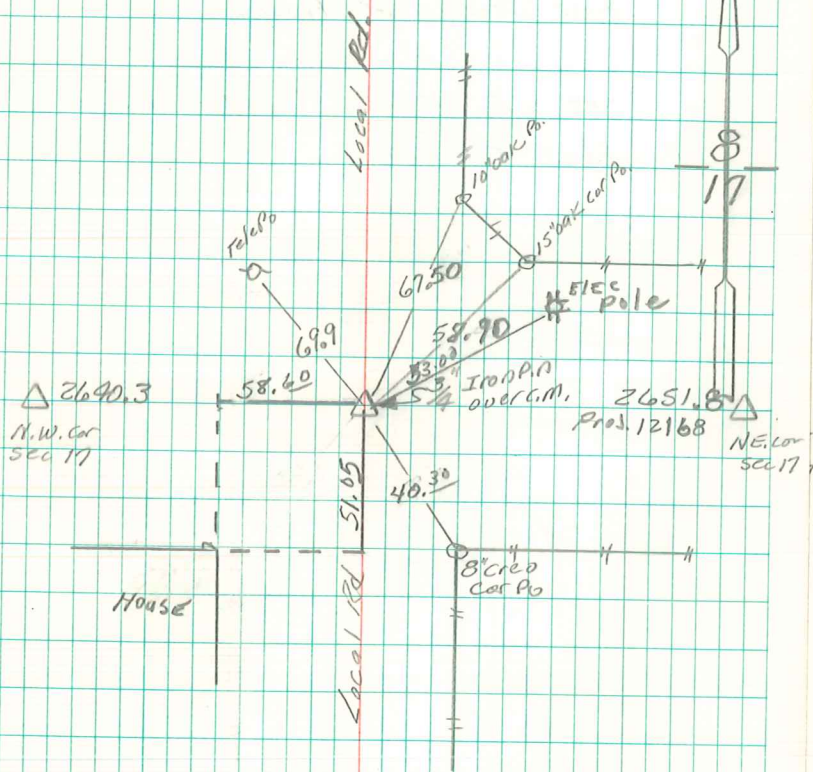
Found 3-3" Drain Tile, 2 Top
ones Filled with concrete
over 2-1 1/2" O Tile. Right where
we set man.

set c.m. on one Horse Shoe Tile
on END Lowered in Position

N 1/4 Cor 15 CC 17-77-20

Set - 8-31-40

Notes: Kennedy - shore, Ogden & Mitchell



RETIRED 3-14-97

ABIE DAVIS