



Document 17-1688

Book 2017 Page 1688 Type CORNR Pages 1
Date 4/24/2017 Time 10:55 AM
Rec Amt \$7.00

KAREN SCHWANEBECK, RECORDER
MARION COUNTY IOWA

PREPARED BY: THAREN HELGERSON NILLES ASSOCIATES, INC. 1250 SW STATE STREET, SUITE A, ANKENY, IOWA 50023 PH: 515-965-0123

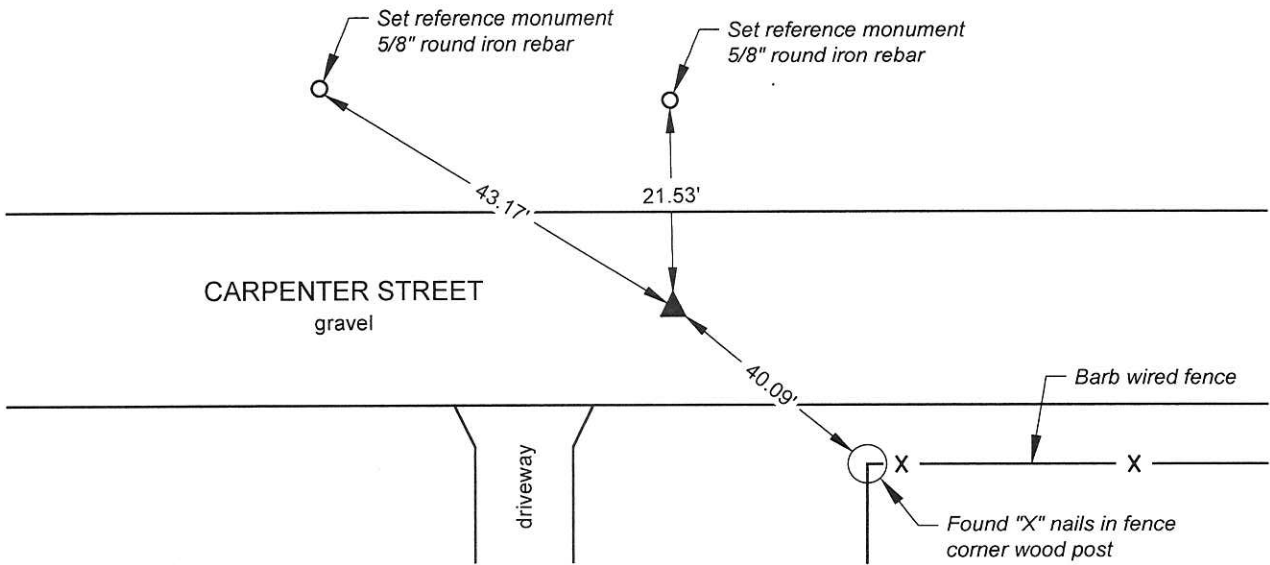
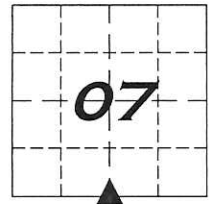
UNITED STATES PUBLIC LAND SURVEY CORNER CERTIFICATE OF

Land Survey Monument situated in Section 07, Township 77 North, Range 20 West of the Fifth Principal Meridian, Marion County, Iowa. Monument previously recorded in Book 01, Page 417 in the Marion County Recorder's Office.

MONUMENT DESCRIPTION AND REMARKS: Found concrete monument with 3" brass cap using remaining corner ties from the Marion County Recorder's Office dated June 22, 1998. Monument found 10 inches deep in gravel road.

PLAN - VIEW

FOUND CONCRETE MONUMENT WITH 3" BRASS CAP



SOUTH QUARTER CORNER OF SECTION 07

I hereby certify that this land surveying document was prepared and the related survey work was performed by me or under my direct personal supervision and that I am a duly licensed land surveyor under the laws of the state of Iowa.

Signature:

Name: Tharen J. Helgerson, L.S. No. 18530

Date

My license renewal date is December 31, 2018

This certification covers this sheet only.

04/14/2017

LIST CORNERS TO BE INDEXED

Corner	Section	Township	Range
South 1/4 Corner	07	77	20
North 1/4 Corner	18	77	20

NILLES ASSOCIATES

1250 SW STATE STREET
SUITE A
ANKENY, IOWA
50023-2555
(515) 965-0123 phone
(515) 965-3322 fax
www.nillesinc.com



PLS 700 ck - Bet Nilles Associates

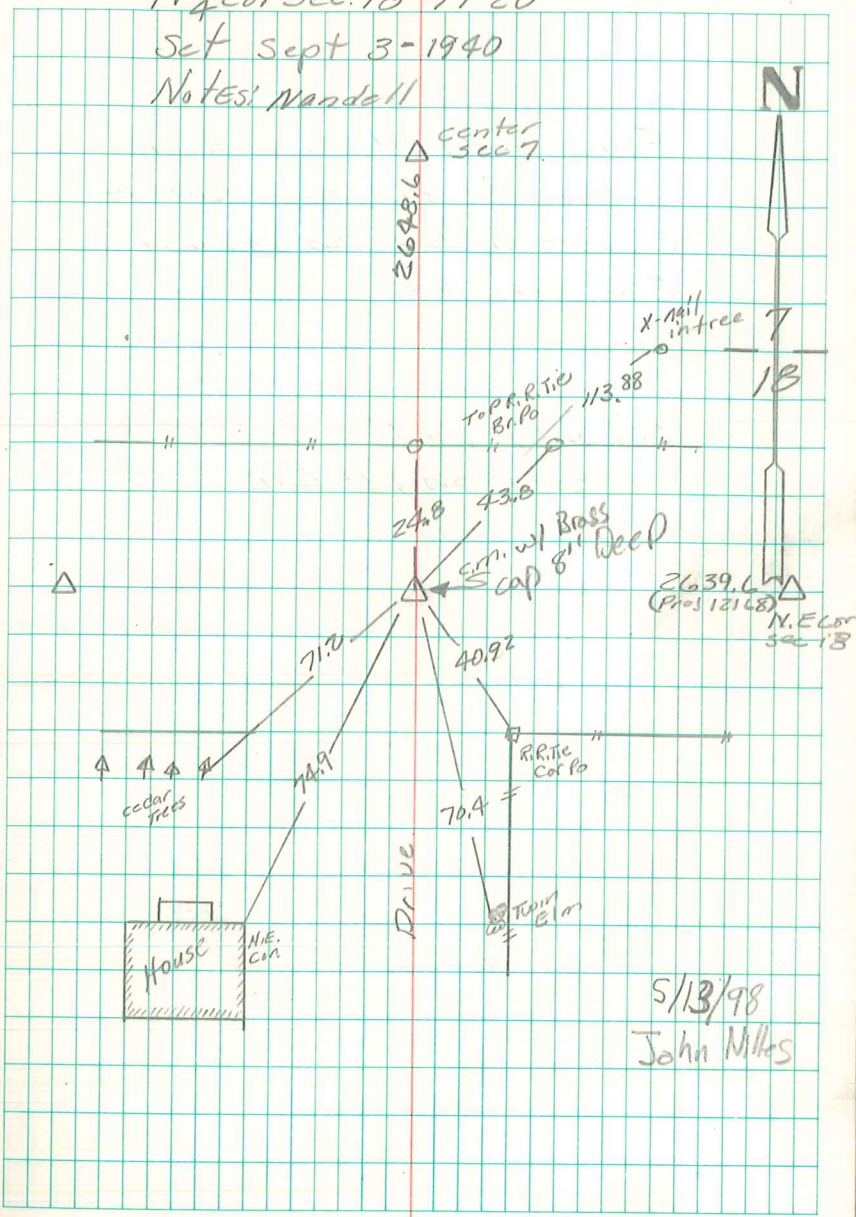
Found sandstone 12"x11"x6" under
 that was wagon skids Filled with
 concrete under that was 4" Hoke
 Filled with cement & Rock. Under
 that was a 2" round tile & Stone.

Lowered tile in Position.
 Set c.m. on Top Rock.
 C.M. 12" Deep.

N 1/4 Cor Sec. 18-77-20

Set Sept 3-1940

Notes: Mandell



5/13/98
 John Miles