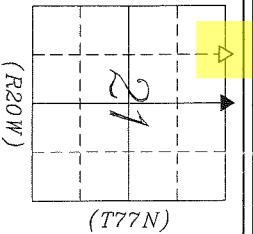


UNITED STATES PUBLIC LAND SURVEY CORNER CERTIFICATE OF

Land Survey Monuments situated in Section 21, Township 77 NORTH, Range 20 WEST,
of the Fifth Principal Meridian, MARION County, Iowa. Instrument # _____

Previously recorded in Book _____, Page _____

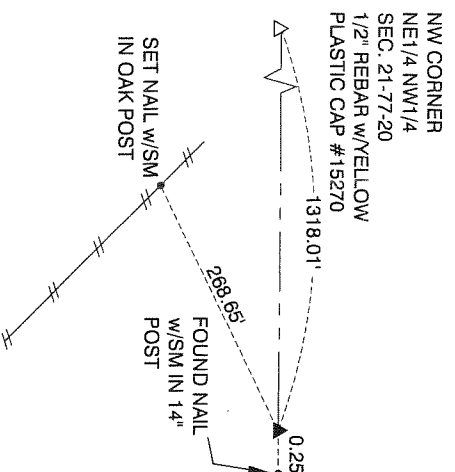
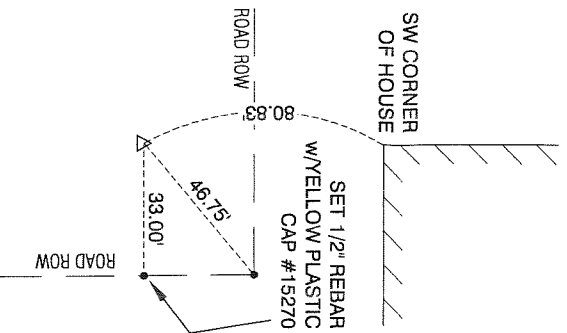
THIS CERTIFICATE WAS PREPARED BECAUSE THESE CORNERS WERE USED DURING A PLAT OF SURVEY IN THE NORTH 1/2 OF
THE NORTHWEST 1/4 OF SECTION 21-77-20. CORNERS WERE FOUND OR SET USING METHODS DESCRIBED BELOW.



PLAN-VIEW NO SCALE

LEGEND:

- ▲ GOVERNMENT CORNER MONUMENT FOUND
- △ GOVERNMENT CORNER MONUMENT SET
- 1/2" x 30" REBAR w/YELLOW PLASTIC ID CAP #15270
- EXISTING FENCE
- NAIL w/SM NAIL WITH SURVEY MARKER



**NE CORNER
NW1/4 NW1/4
SECTION 21-77-20**

SET 1/2" x 30" REBAR w/YELLOW
PLASTIC CAP #15270 ON LINE AND
MIDWAY BETWEEN THE NORTHWEST
CORNER AND THE NORTH 1/4
CORNER OF SECTION 21-77-20

**N1/4 CORNER
SECTION 21-77-20**

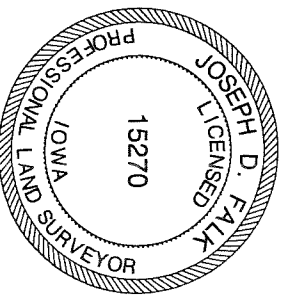
FOUND 4" x 6" x 12" SANDSTONE, 10"
DEEP USING TIES OBTAINED FROM THE
COUNTY ENGINEERS OFFICE



Clapsaddle-Garber Associates, Inc
16 East Main Street
Marshalltown, Iowa 50158
Ph 641 752-6701
www.cgaconsultants.com

DRAWN WLB	SHEET NO. 1
DATE 8-21-2014	PROJECT NO. 76499.05

List Corners to be Indexed			
Corners	Section	Township	Range
NE COR	21	77N	20W
NW1/4 NW1/4			
N1/4 COR	21	77N	20W



I hereby certify that this land surveying document was prepared and the related survey work was performed by me or under my direct personal supervision and that I am a duly Licensed Professional Land Surveyor under the laws of the State of Iowa.

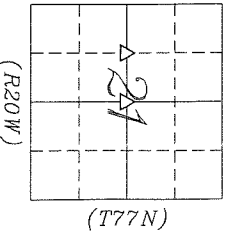
Joseph D. Falk
Joseph D. Falk, PLS
Iowa License Number 15270
date 8-27-14

My License Renewal Date is December 31, 2015
Pages or sheets covered by this seal: THIS SHEET

UNITED STATES PUBLIC LAND SURVEY CORNER CERTIFICATE OF

Land Survey Monuments situated in Section 21, Township 77 NORTH, Range 20 WEST, of the Fifth Principal Meridian, MARION County, Iowa.
 Previously recorded in Book _____, Page _____, Instrument # _____

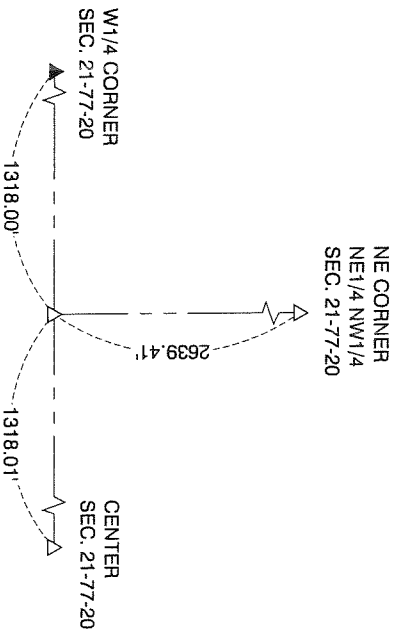
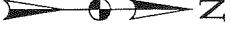
THIS CERTIFICATE WAS PREPARED BECAUSE THESE CORNERS WERE USED DURING A PLAT OF SURVEY IN THE NORTH 1/2 OF THE NORTHWEST 1/4 OF SECTION 21-77-20, CORNERS WERE FOUND OR SET USING METHODS DESCRIBED BELOW.



PLAN-VIEW NO SCALE

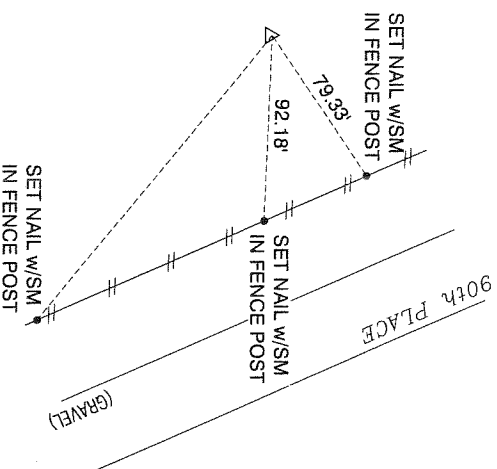
LEGEND:

- ▲ GOVERNMENT CORNER MONUMENT FOUND
- △ GOVERNMENT CORNER MONUMENT SET
- 1/2" x 30" REBAR w/YELLOW PLASTIC ID CAP #15270
- EXISTING FENCE
- ||| NAIL w/SM
- ||| NAIL WITH SURVEY MARKER



SW CORNER
SE 1/4 NW 1/4
SECTION 21-77-20

SET 1/2" x 30" REBAR w/YELLOW PLASTIC CAP #15270. SET AT MIDWAY POINT ON THE SOUTH LINE OF THE NORTHWEST 1/4 OF SECTION 21. LANDS IN MIDDLE OF FIELD. NO STRUCTURES TO THE NEAR THE CORNER



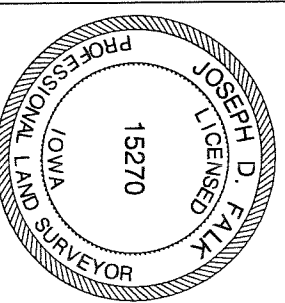
CENTER
SECTION 21-77-20

SET 1/2" x 30" REBAR w/YELLOW PLASTIC CAP #15270. SET SW CORNER OF THE SE 1/4 OF THE NW 1/4 BY PROJECTING THE CENTERLINE OF 90th PLACE TO THE MIDPOINT OF THE SOUTH LINE OF THE NORTHWEST 1/4. THE SOUTH LINE BEING PARALLEL TO THE NORTH LINE OF THE NORTHWEST 1/4, THEN DOUBLING THE DISTANCE TO THE CENTER OF THE SECTION.

CGA
Clapsaddle-Garber Associates, Inc
16 East Main Street
Marshalltown, Iowa 50158
Ph 641 752-6701
www.cgaconsultants.com

DRAWN WLB	SHEET NO. 1
DATE 8-21-2014	PROJECT NO. 76499.05

List Corners to be Indexed			
Corners	Section	Township	Range
SW COR	21	77N	20W
SE 1/4 NW 1/4			
CENTER	21	77N	20W



I hereby certify that this land surveying document was prepared and the related survey work was performed by me or under my direct personal supervision and that I am a duly Licensed Professional Land Surveyor under the laws of the State of Iowa.

Joseph H. D. Falk, PLS
 Iowa License Number 15270
 My License Renewal Date is December 31, 2015
 Pages or sheets covered by this seal: THIS SHEET