

Found 1-2" O tile & one Broken
2" O tile. Right where we set C.M.

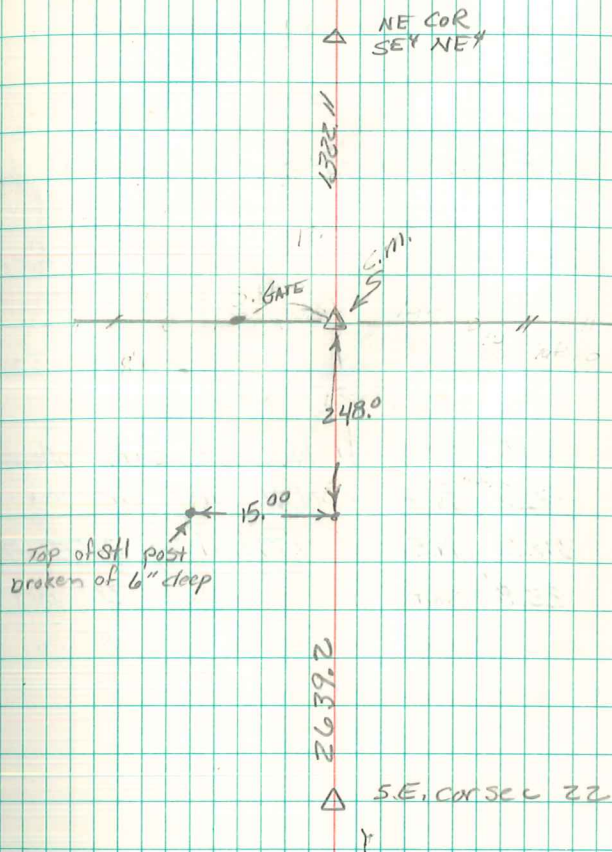
Set C.M. over 1-2" O tile lowered
in Place

8.6' East of 8" oak Br. Po.
0.8' " " 16" " Cor. Po.
12.8' S.E. " 14" " Gate Po.
14.0' West " 16" " " "
135.8' North " 30" W. oak Trcc

E 1/4 Cor Sec 22-77-20

Set - 8-28-40

Notes: Kennedy - Wells, Crozier,
Burrus & Hewitt



Set 2 1/2" ϕ x 20" iron bar
12" deep 5/8" iron pin inside
Top is 6" deep

Abie DAUB
9/5/2007