

Found 2-2" Q Tile. Right  
where we set C.M.

Set C.M. over 1-2" Q Tile Lowered  
in same spot where we  
Found both Tile

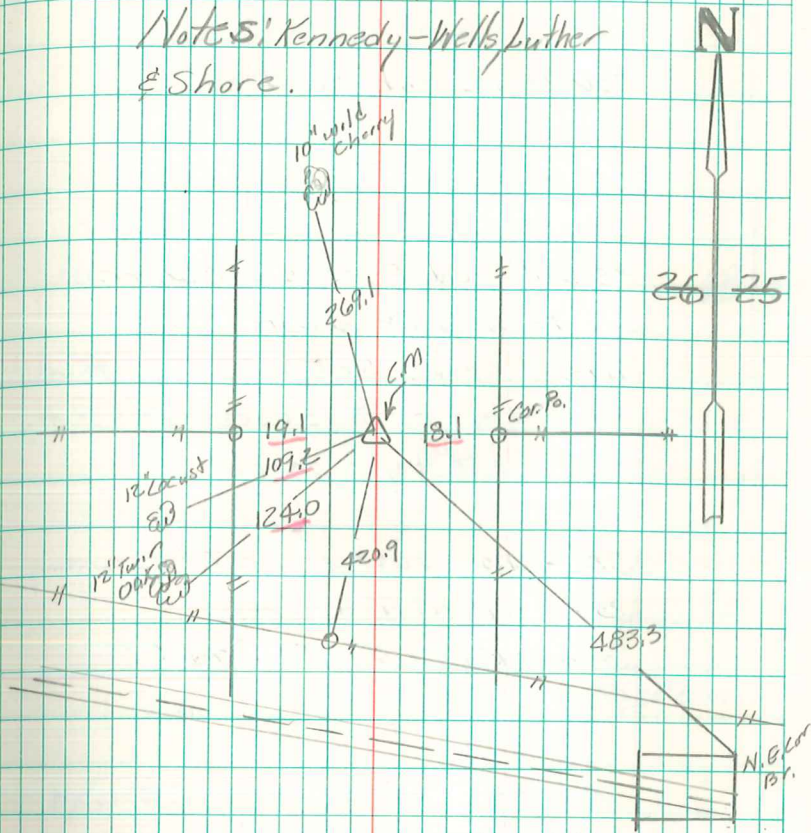
420.9' N. of x Nails in 14" oak Cor Po  
483.3' NW. " " " " N.E. Cor Bridge  
269.1' South " " " " 10" W. Cherry Tree  
2.3' East " N. & S. Fence  
19.0' South " Fence going East

2631.4' North of Sec Cor.

E. 1/4 Cor Sec 26-77-20

Set - 10-14-41

Notes: Kennedy - Wells, Luther  
& Shore.



New Ties Jan 16 - 1970