

Found sandstone 9"x8"x3" &
Granit Rock 18"x12"x4" & Fragments
of 2" Round Tile

Lowered sandstone in place &
scattered pieces of tile around.

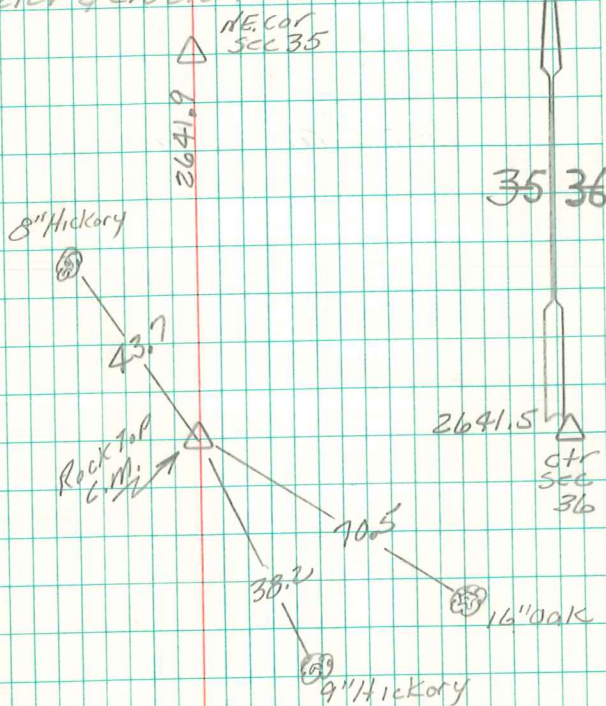
set c.m. on top of stone & tile
Placed Granit Rock top, c.m.

43.7' S.E. of 8" Hickory
70.5' N.W. " 16" oak
38.2' N.W. " 9" Hickory

E 1/4 Cor sec 35-77-20

Set - 12-29-39

Notes: Wignall-Kennedy, sharp-
Frazier & Crozier.



E. 1/4 Cor Sec 35-77-20

N. E. Cor
Sec 35

2641.2

35 36

Trans Pt

105.2

11" Deep 2641.5

N. E. Cor
Sec 36

143.14

230.5

Trans Pt

