

KAREN SCHMANEBECK, RECORDER
 MARION COUNTY IOWA

PREPARED BY: LARRY D. HYLER 3501 104th STREET URBANDALE IOWA 50322 PH: (515) 276-0467

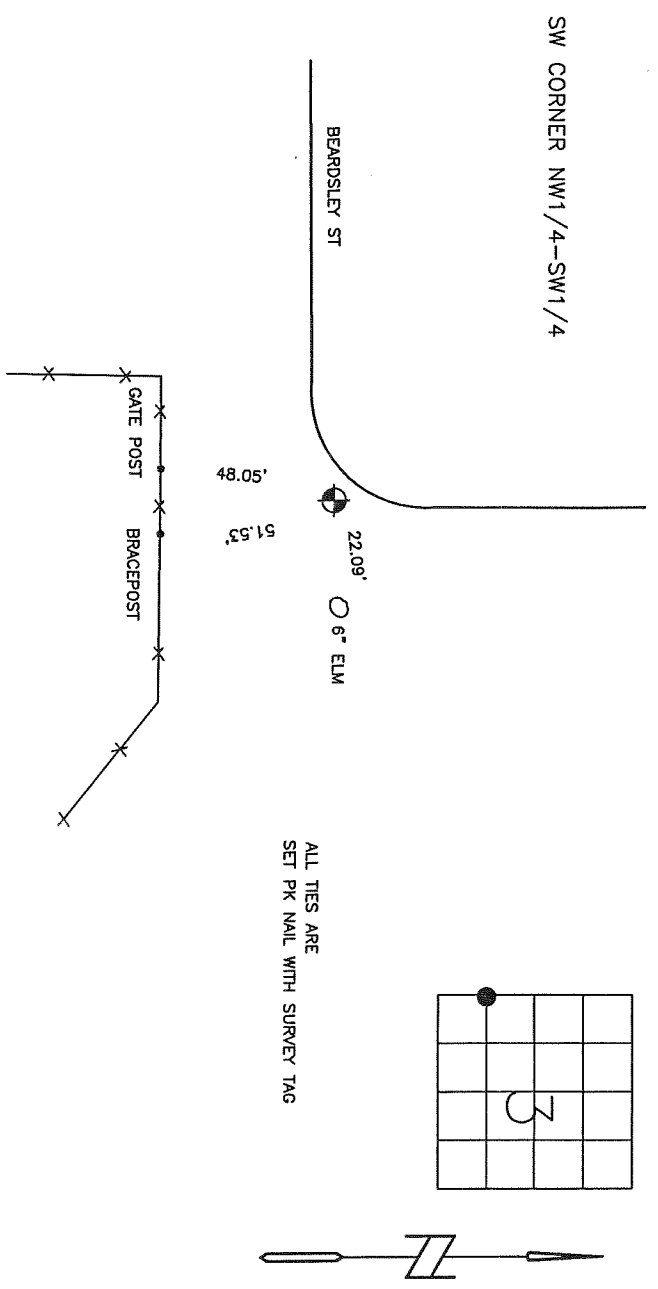
UNITED STATES PUBLIC LAND SURVEY CORNER CERTIFICATE
 OF

Land Survey Monuments situated in Section 3, Township 77 N, Range 20 W, of the Fifth Principal Meridian, MARION County, Iowa.
 Previously recorded in Book NONE, Page _____.

(Show reason for preparing this certificate, the evidence and detailed procedures used in establishing the corner positions and monumentation found or placed).
 Monument Description and Remarks:

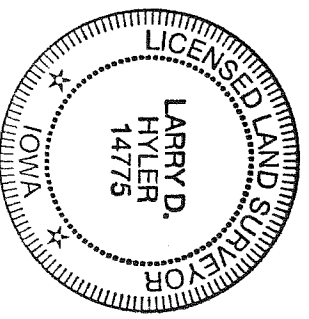
SET AT MID POINT BETWEEN W1/4 CORNER AND SW CORNER.

PLAN-VIEW



I hereby certify that the survey work was completed and this certificate was prepared by me or under my direct personal supervision and that I am a duly licensed land surveyor under the laws of the state of Iowa.

Larry D. Hyler 5-29-2013
 Licensed Land Surveyor No. 14775
 License Renewal Date: 31 Dec. 2014
 SEAL



List Corners to be indexed

Corners	Section	Twp	Range
SW CORNER	3	77N	20W
NW1/4-SW1/4			

PLS 700 CK - For Larry Hyler